

SPIDOGLASS™

SPIDOGLASS

GLASS CERAMIC CONTACT COOKING SYSTEMS





The Spidoglass is more than a contact press; it's a complete cooking system.

With built-in technology such as high temperatures, glass cooking surfaces, fast heat up and SHB Plus Technology, Spidoglass creates opportunities to cook a range of meats, seafood, bacon and eggs, vegetables, and generally all kinds of grilling.

These features provide comfort in the knowledge that the cleaning and maintenance is easier and faster, and energy consumption lower.

Glass Ceramic - the best surface for cooking

- Strong and durable surface
- Doesn't absorb flavour, eliminating taste transfer
- Reduced smoke from cooking and reduced residue on plates

SHB Plus Technology

- A special heating system combining infrared and contact heating systems
- Uniform heat over the entire cook surface
- Very fast heat up times, reducing customer wait time and reduced energy consumption



High Cooking Temperature

- Cook up to 400 degrees
- Allow for a wide variety of food



SPIDOGLOSS™

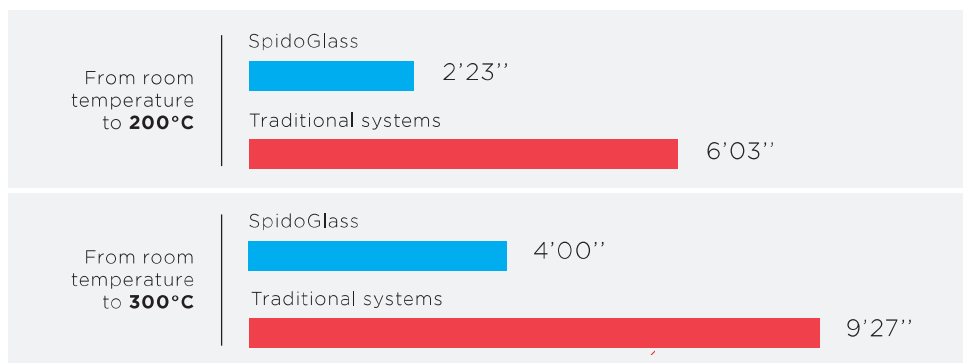
Spidocook™



Protek.SAFE Technology

- The Protek.SAFE Technology minimises energy loss and promotes efficiency by directing most energy to the cooking surface
- Safer for workers
- Less temperature effect on the surrounding environment
- Increased speed in heat up time
- Reduced energy consumption in standby/idle times

Time Savings



Energy Savings

STANDBY POWER CONSUMPTION

	SpidoGlass	Traditional systems
1h / 150°C	45 Wh	230 Wh
1h / 250°C	92 Wh	462 Wh
1h / 300°C	130 Wh	572 Wh

ANNUAL ENERGY CONSUMPTION

425 kWh
SpidoGlass

1030 kWh
Traditional systems

*Annual consumption (250 days) in kWh on a 4 hour working/ 2 hour standby cycle at 300°C with double electric contact grill.



Maintenance and Cleaning

- Easier to clean with smooth non porous cook surface
- Grease collection drip tray



Ask about Spido clean for even easier cleaning

Transparent Cooking Surface

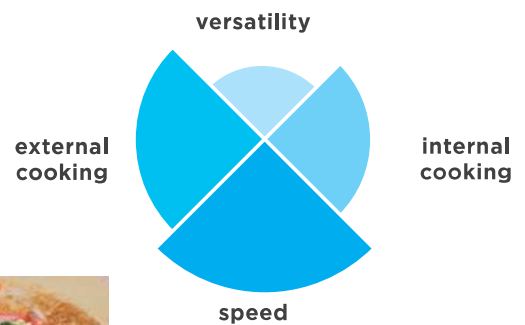


SMOOTH

The transparent plate surface filters the majority of the infrared rays (20% contact cooking - 80% infrared cooking), and therefore provides external surfaces with greater crispiness.



**MAXIMUM
SPEED**

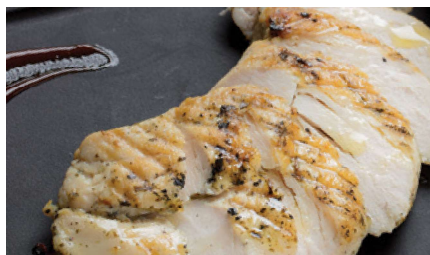


Black Cooking Surface

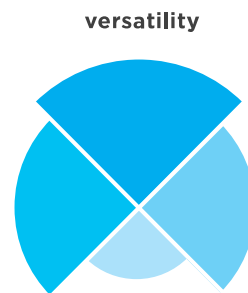


SMOOTH AND RIBBED

The black plate surface, available in smooth and ribbed versions, is less transparent to infrared rays (cooking by 80% contact - 20% infrared cooking), ensuring faster heating of the food core and a more uniform internal temperature.



external
cooking



versatility

internal
cooking

speed

**MAXIMUM
VERSATILITY**

Easy cleaning and maintenance




Models and Specifications

Transparent Smooth Surface



Model	Dimensions W x D X H (mm)	Plate size (mm)	Power	Current	Price
SPE-SP010PT	331 x 458 x 176	250 x 250	1.5kW	10 Amp	\$990



Model	Dimensions W x D X H (mm)	Plate size (mm)	Power	Current	Price
SPE-SP020PT	619 x 458 x 176	2 x 250 x 250	3kW	15 Amp	\$1,530
SPE-SP020T 	619 x 458 x 176	2 x 250 x 250	2kW	10 Amp	\$1,520


Black Smooth Surface - Top and Bottom



Model	Dimensions W x D X H (mm)	Plate size (mm)	Power	Current	Price
SPE-SP010P	331 x 458 x 176	250 x 250	1.5kW	10 Amp	\$1,150

Also available with digital control



Model	Dimensions W x D X H (mm)	Plate size (mm)	Power	Current	Price
SPE-SP020P	619 x 458 x 176	2 x 250 x 250	3kW	15 Amp	\$1,795
SPE-SP020 	619 x 458 x 176	2 x 250 x 250	2kW	10 Amp	\$1,775




Black Ribbed Top Plate, Smooth Bottom



Model	Dimensions W x D X H (mm)	Plate size (mm)	Power	Current	Price
SPE-SP010PR	331 x 458 x 176	250 x 250	1.5kW	10 Amp	\$1,195

Also available with digital control



Model	Dimensions W x D X H (mm)	Plate size (mm)	Power	Current	Price
SPE-SP020PR	619 x 458 x 176	2 x 250 x 250	3kW	15 Amp	\$1,815
SPE-SP020R 	619 x 458 x 176	2 x 250 x 250	2kW	10 Amp	\$1,795



Models and Specifications: Medium Range



Transparent Smooth Surface

Model	Dimensions W x D X H (mm)	Plate size (mm)	Power	Current	Price
SPE-SP015PT	481 x 457 x 182	300 x 400	3kW	15 Amp	\$1,690
SPE-SP015T 	481 x 457 x 182	300 x 400	2kW	10 Amp	\$1,690



Black Smooth Surface

Model	Dimensions W x D X H (mm)	Plate size (mm)	Power	Current	Price
SPE-SP015P	481 x 457 x 182	300 x 400	3kW	15 Amp	\$1,775
SPE-SP015 	481 x 457 x 182	300 x 400	2kW	10 Amp	\$1,775



Black Ribbed Surface

Model	Dimensions W x D X H (mm)	Plate size (mm)	Power	Current	Price
SPE-SP015PR	481 x 457 x 182	300 x 400	3kW	15 Amp	\$1,775
SPE-SP015R 	481 x 457 x 182	300 x 400	2kW	10 Amp	\$1,775

