

simply
philosophy



International Showroom

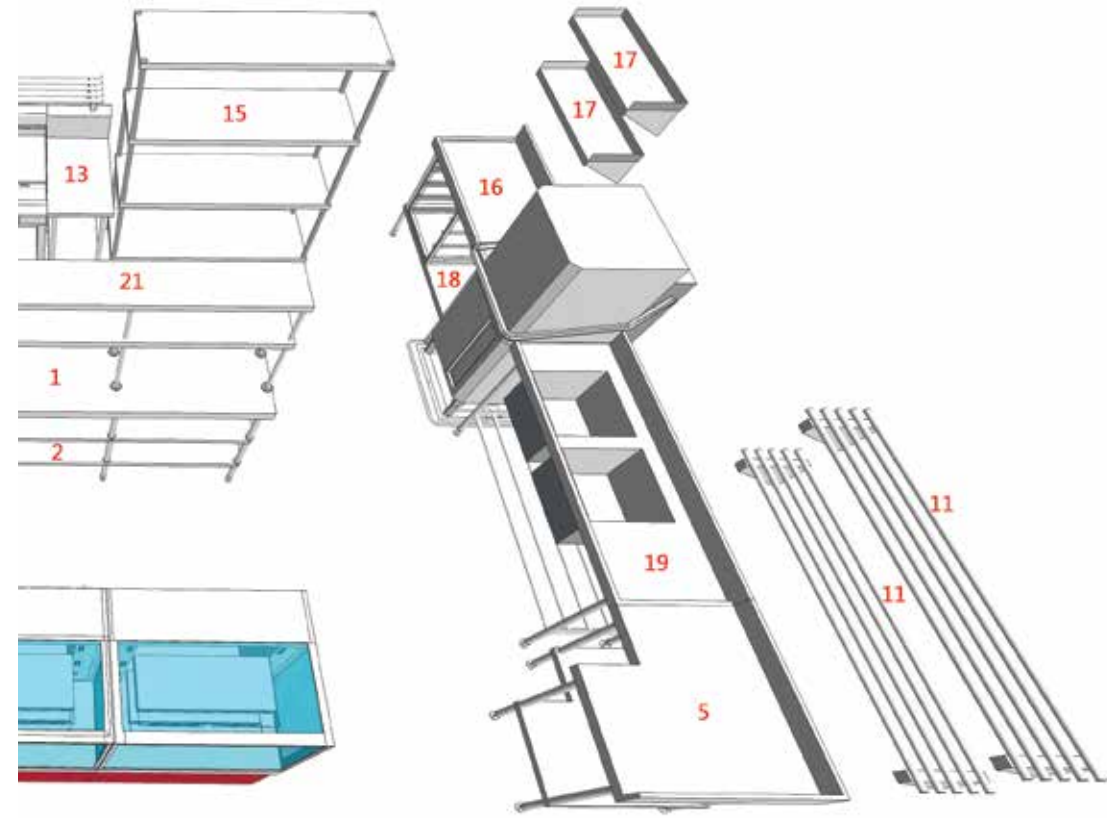
Quality

Availability

Value



simply
the best
system



see inside for product index

simply
the best
service

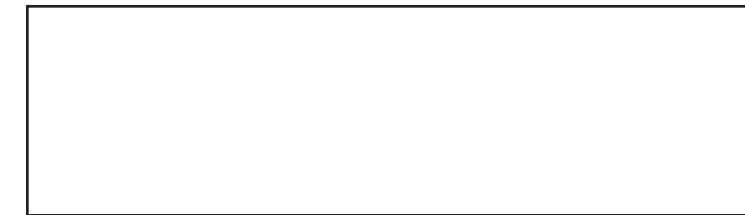


Simply Stainless strives for quality, availability and value. To assist with your design, all drawings can be downloaded from our product catalogue at www.simplystainless.com

For further information, please email: info@simplystainless.com
Full range is wholly manufactured out of an ISO9001 accredited factory that manufactures exclusively for Simply Stainless.



Available from



www.simplystainless.com
e-mail: info@simplystainless.com



simply stainless reserves the right to change specification, price and design without notice.

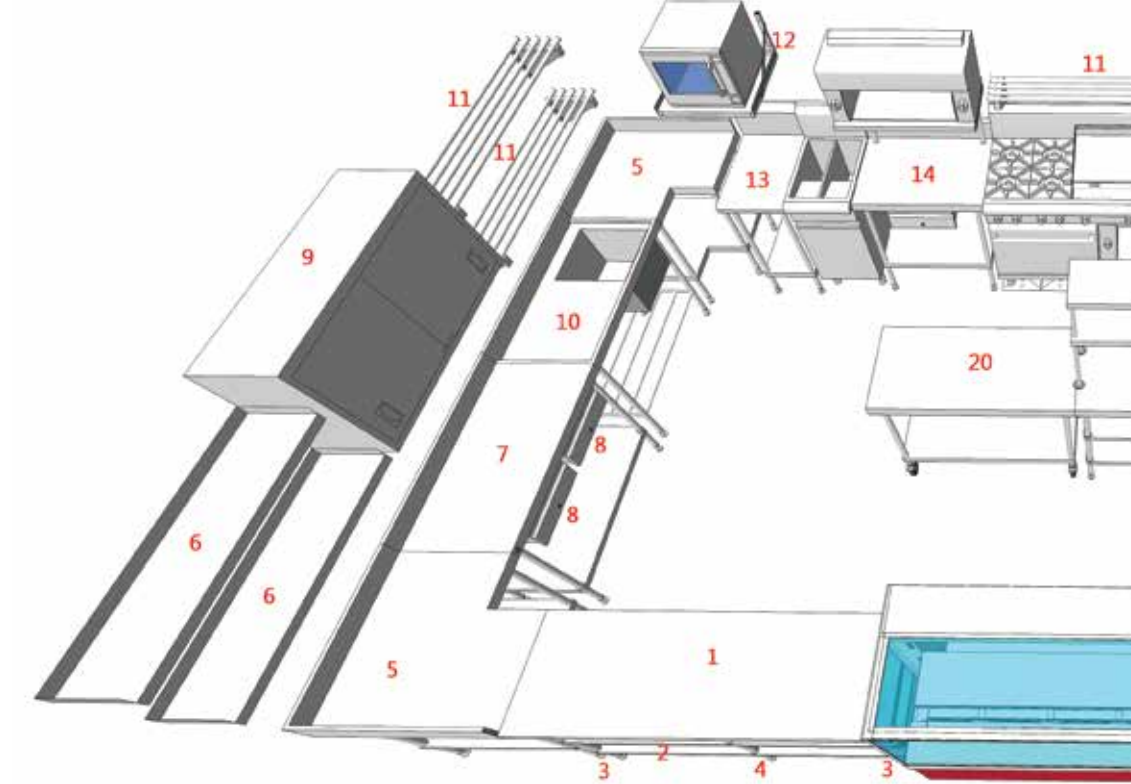


simply
the best
system



www.simplystainless.com

simply
available



See your local dealer
for immediate delivery

simply



the highest quality

How do you recognise quality in a modular benching system?

- The "stability test" and the "knock test"
- Close tolerance CNC engineering and machinery
- Highest quality TIG welding and professional finish
- Fully-welded sinks with uniformity of gauge thickness throughout and stainless steel reinforcing channel to worktop

Our confidence in Simply Stainless quality is backed by our Lifetime Warranty. See website for details.



simply built to last



1. Workbench



01-6-0600 01-7-0600 01-9-1200
01-6-0900 01-7-0900 01-9-1500
01-6-1200 01-7-1200 01-9-1800
01-6-1500 01-7-1500 01-9-2100
01-6-1800 01-7-1800 01-9-2400
01-6-2100 01-7-2100
01-6-2400 01-7-2400

4. Corner Bench with Splashback



04-6-0900 04-7-0900

7. Dishwash Outlet Bench



07-6-2100L 07-6-2100R
07-7-1200L 07-7-1200R
07-7-1500L 07-7-1500R
07-7-1650L 07-7-1650R
07-6-1200L 07-6-1650L 07-7-1800L
07-6-1200R 07-6-1650R 07-7-1800R
07-6-1500L 07-6-1800L 07-7-2100L
07-6-1500R 07-6-1800R 07-7-2100R

10. Solid Wall Shelf



10-0600 10-0900 10-1200 10-1500 10-1800 10-2100 10-2400

2. Workbench with Splashback



02-6-0300 02-6-1800 02-7-0900
02-6-0450 02-6-2100 02-7-1200
02-6-0600 02-6-2400 02-7-1500
02-6-0900 02-7-0300 02-7-1800
02-6-1200 02-7-0450 02-7-2100
02-6-1500 02-7-0600 02-7-2400
Also available as low height mixer stand 02-7-0600MS

5. Sink Bench with Splashback



05-6-0600 05-6-1200C 05-6-1200L 05-6-1200R 05-6-1500C 05-6-1500L 05-6-1500R 05-6-1800C 05-6-1800L 05-6-1800R 05-6-1800R 05-7-1800L 05-7-0600 05-7-1500C 05-7-1800R 05-7-1200C 05-7-1500L 05-7-2100C 05-7-1200L 05-7-1500R 05-7-2100L 05-7-1200R 05-7-1800C 05-7-2100R

8. Dishwash Inlet with Sink



08-6-2100L 08-6-2100R 08-7-1200L 08-7-1200R 08-7-1500L 08-7-1500R 08-7-1650L 08-7-1650R 08-6-1200L 08-6-1650L 08-7-1800L 08-6-1200R 08-6-1650R 08-7-1800R 08-6-1500L 08-6-1800L 08-7-2100L 08-6-1500R 08-6-1800R 08-7-2100R

11. Pipe Wall Shelf



11-0600 11-0900 11-1200 11-1500 11-1800 11-2100 11-2400

3. Workbench Mobile



03-6-0600 03-6-2100 03-7-1500
03-6-0900 03-6-2400 03-7-1800
03-6-1200 03-7-0600 03-7-2100
03-6-1500 03-7-0900 03-7-2400
03-6-1800 03-7-1200

6. Double Sink Bench with Splashback



06-6-1200 06-7-1200 06-6-1500 06-7-1500 06-6-1800 06-7-1800 06-6-2100 06-7-2100 06-6-2400 06-7-2400

9. Double Bowl Dishwash Entry



09-6-1650-DB-R 09-7-1650-DB-R
09-6-1650-DB-L 09-7-1650-DB-L

12. Single-Tier Shelf



12-0600 12-0900 12-1200 12-1500 12-1800 12-2100 12-2400



13. Two-Tier Shelf



13-0600 13-0900 13-1200 13-1500 13-1800 13-2100

16. Mobile Gastronorm & Bakery Rack Trolley



BT Bakery Trolley
BTI Bakery Trolley Imperial
16-1/1 Gastronorm
16-2/1 Gastronorm
16-1/1 LH (Low Height)

19. Drawers



19-1 Single
19-2 Double
19-3 Triple
19-GN (Gastronorm Pan)

22. Leg Brace



22-LB-6-0600 22-LB-7-0600
22-LB-6-0900 22-LB-7-0900
22-LB-6-1200 22-LB-7-1200
22-LB-6-1500 22-LB-7-1500
22-LB-6-1800 22-LB-7-1800
22-LB-6-2100 22-LB-7-2100
22-LB-6-2400 22-LB-7-2400

14. Two-Tier Trolley



14-2

17. Four-Tier Storage Shelving



17-0900 17-1200 17-1500

20. Sink Cover



20-SBC

23. Granite Workbench



23-0600b 23-0600w 23-0900b 23-0900w 23-1200b 23-1200w

15. Three-Tier Trolley



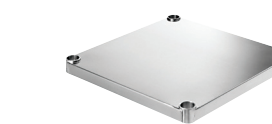
15-3

17. Defrost Rack



17-DF-0900 17-DF-1200

21. Undershelf



21-US-6-0600 21-US-7-0600
21-US-6-0900 21-US-7-0900
21-US-6-1200 21-US-7-1200
21-US-6-1500 21-US-7-1500
21-US-6-1800 21-US-7-1800
21-US-6-2100 21-US-7-2100
21-US-6-2400 21-US-7-2400
21-US-6-4-0900 21-US-7-4-0900

24. Triple Bowl Sink with Upstand



24-6-2400TB 24-7-2400TB



25. Single Storage Shelf (to suit item 17)



25-SS Shelf-0900 25-SS Shelf-1200 25-SS Shelf-1500

28. Microwave Shelves



28-MW-0450 28-MW-0580

31. Blue Seal/Waldorf Infill Bench



31-BS-0300 31-BS-0450 31-BS-0600 31-BS-0900 31-WD-0300 31-WD-0450 31-WD-0600 31-WD-0900

33. Bollard



33-SSB

36. Dishwash Basket Cassette



36-DBC

26. Ingredient Bins



26-bin

29. Wall Cupboards



29-WC-0900 29-WC-1200

32. Door Panel Kit



32-DPK-0600 32-DPK-0900 32-DPK-1200 32-DPK-1500 32-DPK-1800 32-DPK-2100 32-DPK-2400

35. Gastronorm Dish Cassette



35-GDC

36. Dishwash Basket Cassette



36-DBC

37. Dishwash Entry/Exit



37-6-0600

38. Folding Table



38-ET

39. Sink Waste and Basket



39-90mm

27. Combi Oven Stand



27-conv 6/10+10/10 27-conv 6/20+10/20 27-E32-Turbo 27-Elux 27-Rat

32. Counter Conversion Kit



32-CCK-0600 32-CCK-0900 32-CCK-1200 32-CCK-1500 32-CCK-1800 32-CCK-2100 32-CCK-2400

36. Glaswash Rack



36-GR

36. Dishwash Basket Stand



36-DBS

40. Waiter's Station

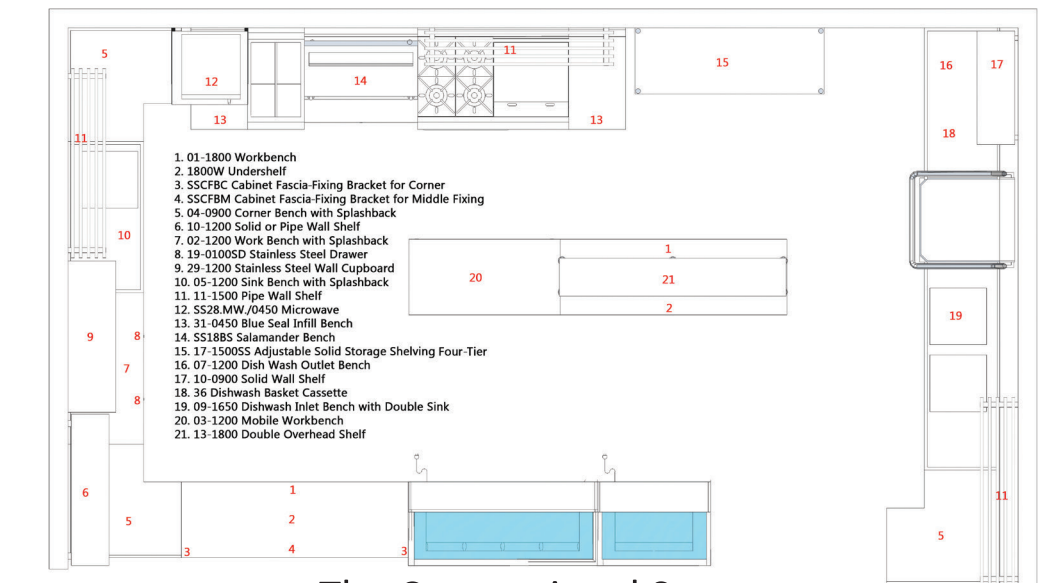


40-WS

simply



the best value



1. 01-1800 Workbench
2. 1800W Undershelf
3. SSCFCB Cabinet Fascia-Fixing Bracket for Corner
4. SSCFCB Cabinet Fascia-Fixing Bracket for Middle Fixing
5. 04-0900 Corner Bench with Splashback
6. 10-1200 Solid or Pipe Wall Shelf
7. 02-1200 Work Bench with Splashback
8. 19-0100SD Stainless Steel Drawer
9. 29-1200 Stainless Steel Wall Cupboard
10. 05-1200 Sink Bench with Splashback
11. 11-1500 Pipe Wall Shelf
12. SS28-MW-0450 Microwave
13. 31-0450 Blue Seal Infill Bench
14. SS188S Salamander Bench
15. 17-1500S Adjustable Solid Storage Shelving Four-Tier
16. 07-1200 Dish Wash Outlet Bench
17. 10-0900 Solid Wall Shelf
18. 36 Dishwash Basket Cassette
19. 09-1650 Dishwash Inlet Bench with Double Sink
20. 03-1200 Mobile Workbench
21. 13-1800 Double Overhead Shelf

The Conventional System
Custom Stainless Steel Benching – Supplied & Installed
***USD \$22,500**

The Simply System
Modular Stainless Steel Benching – Supplied & Installed
***USD \$10,093 Save *USD \$12,407!!!**

*pricing based on the above specification as at 2016. Price derived from an average of two Australian independent manufacturers

Specifications 600 & 700 series

Tops

- 1.2mm stainless steel no.4 finish

Cores

- 3mm Zinalume
- 1.2 mm Stainless steel top hat stiffening channel

Frames/legs

- 38mm Dia round stainless steel tube satin polished 1.2mm thick.
- Bench height 900mmH
- Adjustable by 30/40mm
- Stainless steel disc feet

Undershelves

- 1.2mm stainless steel no.4 finish with 'top hat' reinforcement

Bowls

- 1.2mm fully-welded and polished
- 450 x 450 x 300mm deep bowls in all benches to accept 90mm sink waste
- 600 x 450 x 300mm deep bowls in 06-6-2400 and 06-7-2400 only
- Watermark & Watercorp approved sink waste supplied with all bowls