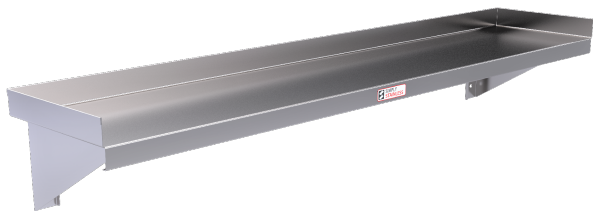




SIMPLY STAINLESS

Modular Sinks, Tables & Shelving



10-1500

*Units 600mm to 1500mm have 2 brackets.



10-1800

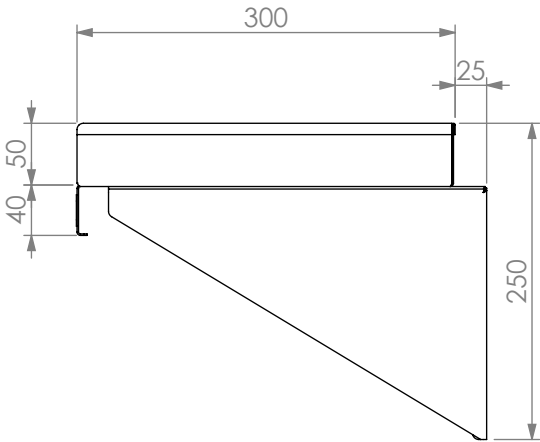
*Units 1800mm to 2400mm have 3 brackets.



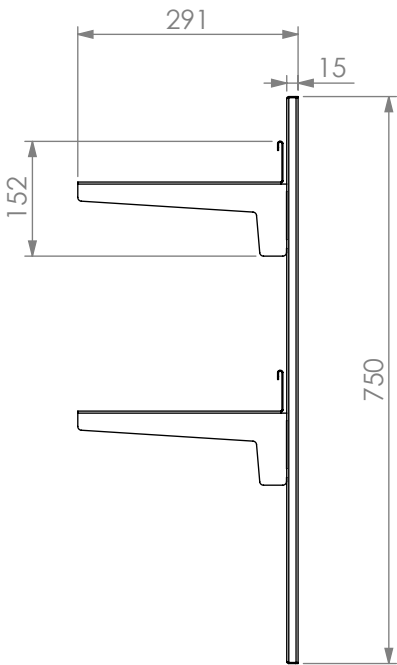
10-KIT A

*10-KIT A have 2 brackets.
*10-KIT B have 3 brackets.

SPECIFICATION	
Tops	- High quality stainless steel. - 1.2mm gauge, no. 4 Finnish. - Safety edge all around.
Frames	- Stainless Steel Brackets.



WALL SHELF



2 TIER ADJUSTABLE WALL SHELF KIT

10	Wall Shelf & Adjustable Wall Shelf Kit		
	Product Code	Unit weight (Kg)	Dimensions (mm)
	10-0600	5	600x325x252
	10-0900	7	900x325x252
	10-1200	8	1200x325x252
	10-1500	9	1500x325x252
	10-1800	11	1800x325x252
	10-2100	12	2100x325x252
	10-2400	13	2400x325x252
	10-KIT A		2x brackets
	10-KIT B		3x brackets



100%
RECYCLABLE
STAINLESS STEEL

