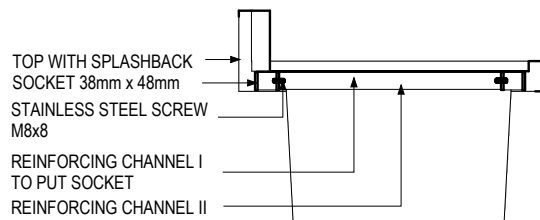
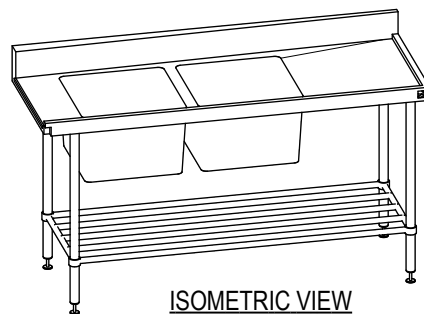


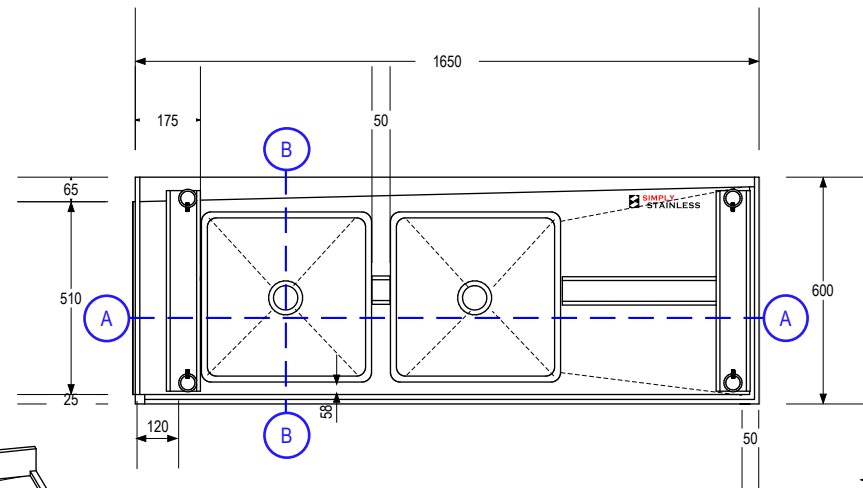
A-SECTION VIEW
SCALE 1:15mm



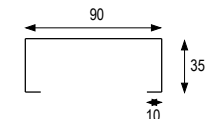
B-SECTION VIEW
SCALE 1:15mm



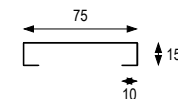
ISOMETRIC VIEW
do not scale



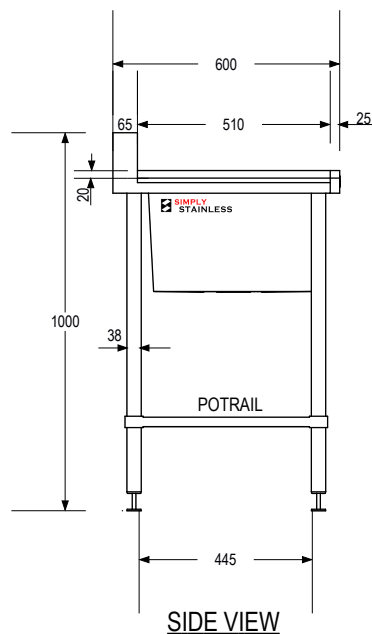
BOTTOM-PLAN VIEW (TOP ONLY)



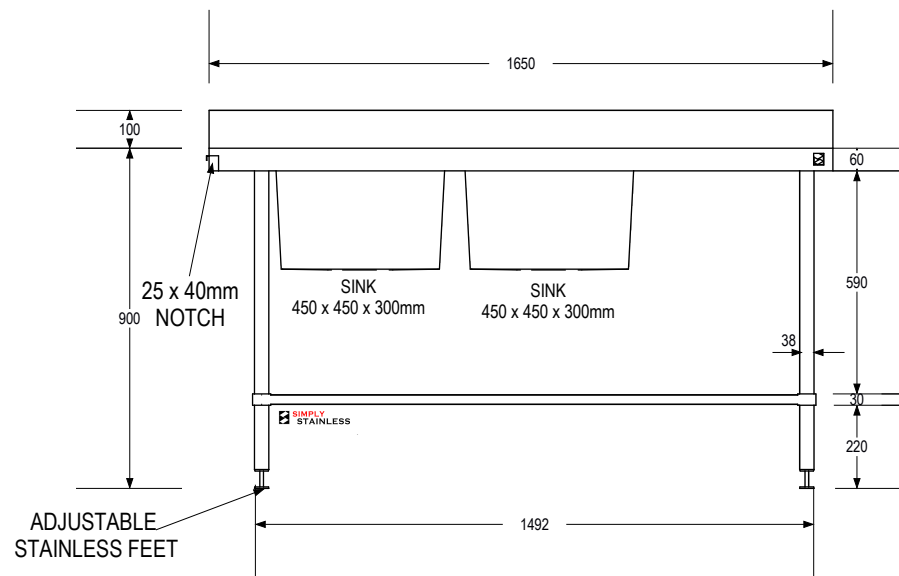
**REINFORCING CHANNEL I
DETAILS**



**REINFORCING CHANNEL II
DETAILS**



SIDE VIEW



FRONT VIEW



SIMPLY STAINLESS

www.simplystainless.com

Modular Sinks Tables and Shelving

COPYRIGHT © 2016

This drawing is the property of CI GROUP PTY LTD. Tradings as SIMPLY STAINLESS and it may not be copied, reproduced or modified in whole or in part without prior written permission of CI GROUP PTY LTD.

09-6-1650-DB-R DOUBLE SINK INLET BENCH

scale 1:20

- FULL SS CONSTRUCTION NOTES :**
1. TOP MADE FROM 1.2mm STAINLESS STEEL.
 2. CHANNEL REINFORCING I & II MADE FROM 1.2mm STAINLESS STEEL.
 3. SINKS MADE FROM 1.2mm STAINLESS STEEL
 4. FRAME MADE FROM Ø38mm STAINLESS STEEL TUBE.
 5. POTRAIL MADE FROM STAINLESS STEEL ROUND TUBE.
 6. FEET ARE ADJUSTABLE STAINLESS STEEL DISC SHAPED FEET.