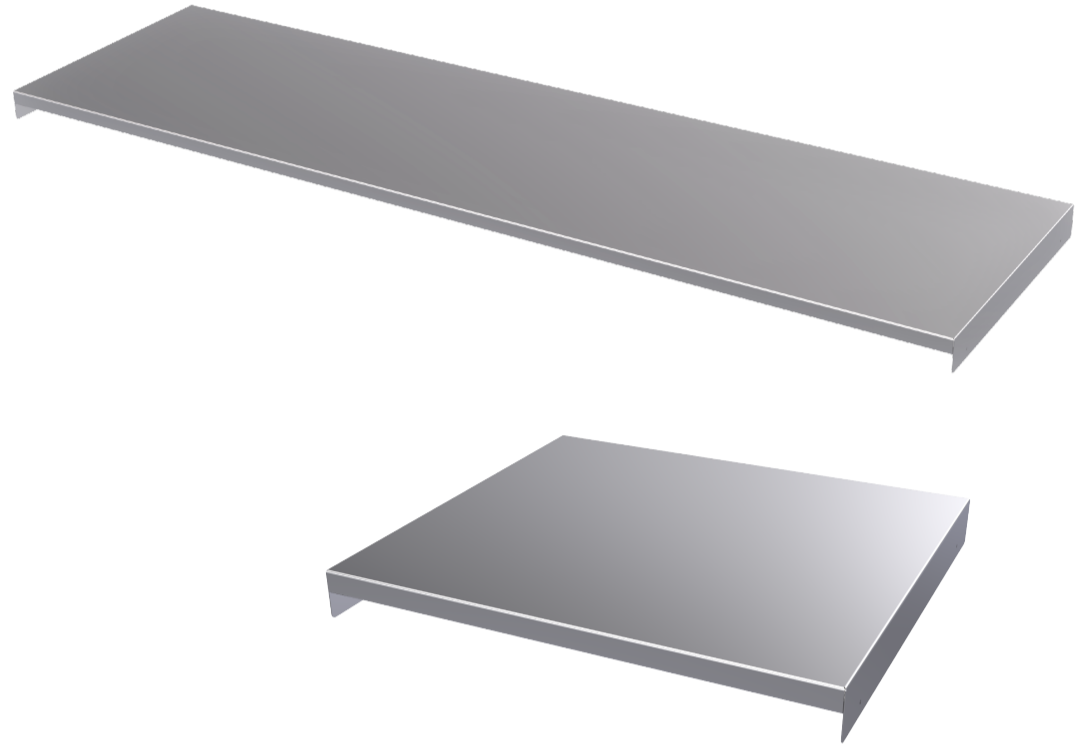




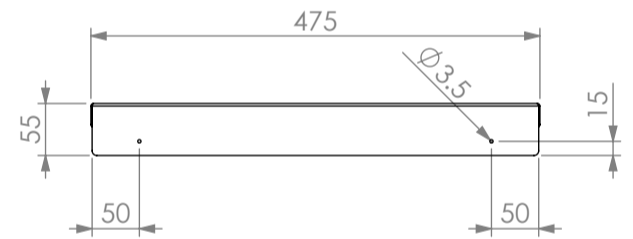
# SIMPLY STAINLESS

Modular Sinks, Tables & Shelving



\*Bench not included. For illustration only.

SPECIFICATION	
Undershelf	- High Quality 1.2mm Gauge Stainless Steel. - Top Hat Stiffening Channel Below



**NOTE:**  
1. 700mm DEEP MODULE ELEVATION.

	UNDERSHELVES	
	Product Code	Dimensions (mm)
<b>SBM-US</b>	SBM-US-6-0600	537x375x55
	SBM-US-6-0900	837x375x55
	SBM-US-6-1036 (Half undershelf to suit 2100 bar module)	1036x375x55
	SBM-US-6-1186 (Half undershelf to suit 2400 bar module)	1186x375x55
	SBM-US-6-1200	1137x375x55
	SBM-US-6-1500	1437x375x55
	SBM-US-6-1800	1737x375x55
	SBM-US-6-2100	2037x375x55
	SBM-US-6-2400	2337x375x55
	SBM-US-7-0600	537x475x55
	SBM-US-7-0900	837x475x55
	SBM-US-7-1036 (Half undershelf to suit 2100 bar module)	1036x475x55
	SBM-US-7-1186 (Half undershelf to suit 2400 bar module)	1186x475x55
	SBM-US-7-1200	1137x475x55
	SBM-US-7-1500	1437x475x55
	SBM-US-7-1800	1737x475x55
	SBM-US-7-2100	2037x475x55
	SBM-US-7-2400	2337x475x55

