

Simply Stainless strives for quality, availability and value. To assist with your bar design, all drawings can be downloaded from our product catalogue at [www.simplystainless.com](http://www.simplystainless.com). We also offer a free bar design service, a free online design tool as well as a 3D product viewer - please get in touch with us for more details at [info@simplystainless.com](mailto:info@simplystainless.com)

Full range is wholly manufactured out of an ISO9001 accredited factory that manufactures exclusively for Simply Stainless.

**Why Modular matters**

- Delivered in flat packaging for easy portability and site access.
- Simple assembly and installation.
- The Modular System is designed to suit a variety of applications.
- Personalise front bar panel as you see fit.

Available from

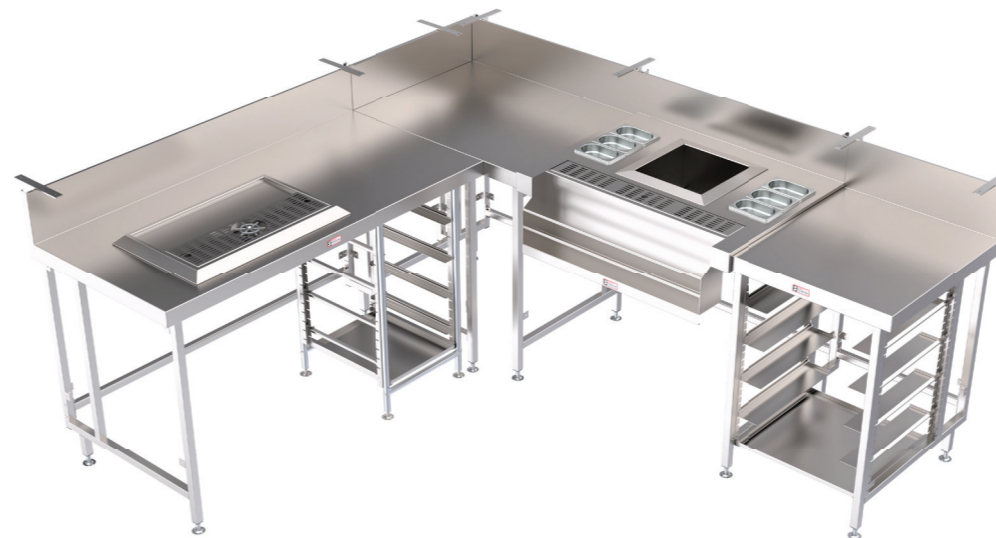


[www.simplystainless.com](http://www.simplystainless.com)

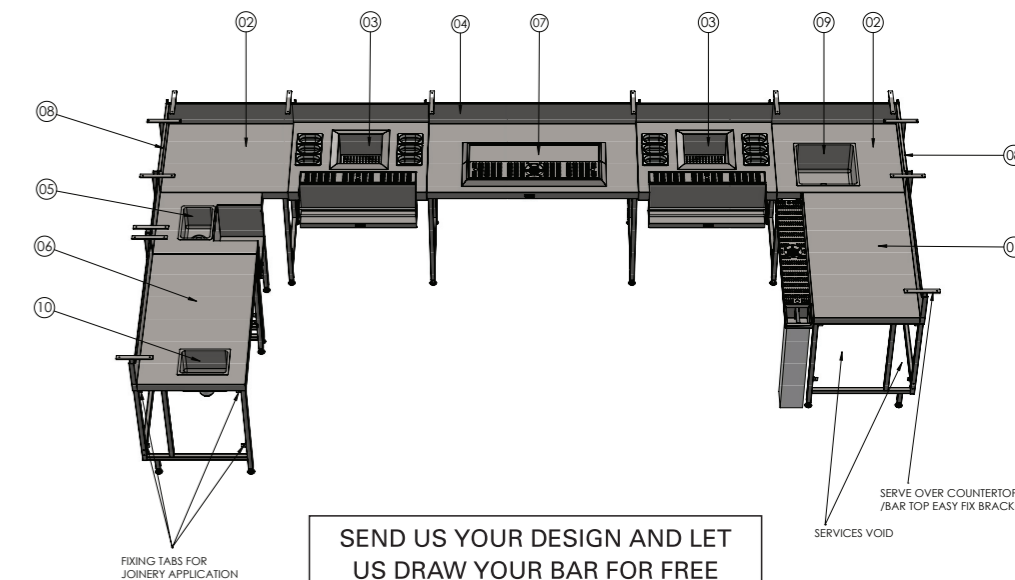
e-mail: [info@simplystainless.com](mailto:info@simplystainless.com)



Simply Stainless reserves the right to change specification, price and design without notice.



[www.simplystainless.com](http://www.simplystainless.com)



**SIMPLY STAINLESS** **SAMPLE BAR DRAWING**

ITEM NO.	PART NO.	DESCRIPTION	QTY
01	SBM-CB-7-1200	BAR MODULE COFFEE BENCH 1200mm	1
02	SBM-7-0900	BAR MODULE 900mm	2
03	SBM-CS-7-0950	COCKTAIL STATION 950mm	2
04	SBM-7-1500	BAR MODULE 1500mm	1
05	SBM-BL-7-0600	BLENDER STATION 600mm	1
06	SBM-7-1200	BAR MODULE 1200mm	1
07	SBM-CTBS-GR-0900	COUNTER TOP BEER STATION W/GLASS RINSE 900mm	1
08	SBM-EPK-700	END PANEL KIT FOR 700 SERIES	2
09	SBM-WS	WASH SINK	1
10	SBM-HB	BOWL 11 LITRE HAND BASIN	1

See your local dealer for immediate delivery



see inside for product index

**Single Bar Module  
600mm**



SBM-6-0600 | SBM-6-1800  
SBM-6-0900 | SBM-6-2100  
SBM-6-1200 | SBM-6-2400  
SBM-6-1500

**Single Bar Module  
700mm**



SBM-7-0600 | SBM-7-1800  
SBM-7-0900 | SBM-7-2100  
SBM-7-1200 | SBM-7-2400  
SBM-7-1500

**Blender Station**



SBM-BL-6-0600  
SBM-BL-7-0600

**Coffee Station**



SBM-CB-7-0900  
SBM-CB-7-1200

**Mobile Bar**



SBM-M-6-1200 | SBM-M-7-1200  
SBM-M-6-1500 | SBM-M-7-1500  
SBM-M-6-1800 | SBM-M-7-1800

**Corner Infill**



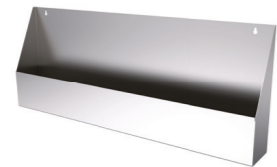
SBM-CI-0600  
SBM-CI-0700

**Bar Module Basket  
Rack**



SBM-BR-6-0650  
SBM-BR-7-0650

**Speed Racks**



SBM-SR-0560  
SBM-SR-0815

**Cocktail Station**



SBM-CS-6-0950  
SBM-CS-7-0950

simply  
the highest quality



Modular Bar Solutions

**Beer Station**



SBM-BS-6-0950 | SBM-BS-7-0950  
SBM-BS-6-1300 | SBM-BS-7-1300

**Beer Station with Glass Rinser**



SBM-BS-GR-6-0950 | SBM-BS-GR-7-0950  
SBM-BS-GR-6-1300 | SBM-BS-GR-7-1300

**Drop in Beer Station**



SBM-DBS-0600  
SBM-DBS-0900

**Drop in Beer Station with Glass Rinser**



SBM-DBS-GR-0600  
SBM-DBS-GR-0900

**Countertop Beer Station**



SBM-CTBS-0400 | SBM-CTBS-1200  
SBM-CTBS-0600 | SBM-CTBS-1500  
SBM-CTBS-0900

**Countertop Beer Station with Glass Rinser**



SBM-CTBS-GR-0400 | SBM-CTBS-GR-1200  
SBM-CTBS-GR-0600 | SBM-CTBS-GR-1500  
SBM-CTBS-GR-0900

**Drip Tray**



SBM-DT-0300 | SBM-DT-0600 | SBM-DT-0900

**Drip Tray with Glass Rinser**



SBM-DT-GR-0300 | SBM-DT-GR-0600

**Undercounter DW Basket Rack**



36.DBS

**Undercounter Glass Rack**



36.GR | 36.DGR

**End Panel Kit**



SBM-6-EPK | SBM-7-EPK | SBM-SOS

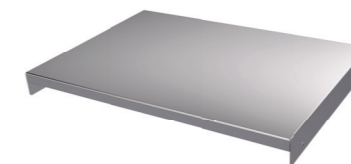
**Bar Module Undershelf**

SBM-US-6-0600	SBM-US-6-1800	SBM-US-7-1186
SBM-US-6-0900	SBM-US-6-2100	SBM-US-7-1200
SBM-US-6-1036	SBM-US-6-2400	SBM-US-7-1500
SBM-US-6-1186	SBM-US-7-0600	SBM-US-7-1800
SBM-US-6-1200	SBM-US-7-0900	SBM-US-7-2100
SBM-US-6-1500	SBM-US-7-1036	SBM-US-7-2400

**Sinks**



SBM-HB (200 x 300 x 185)  
SBM-WS (400 x 400 x 250)  
SBM-WSC (Wash Sink Cover)



simply  
the best value



Modular Bar Solutions

**Ice Wells**



41.IWS (400 x 400 x 225)  
41.IWB (775 x 480 x 300)  
Ice Well lids and dividers available  
(Optional extra)

**Glass Rinser**



SBM-GR

**Condiment Holder**



SBM-CH-3 (404 x 303 x 140)  
SBM-CH-6 (785 x 200 x 155)  
(Dishes not included)

**Modular Bar Specification**  
SPECIFICATIONS 600 & 700 SERIES

**Tops**

- 1.2mm SUS304 grade stainless steel, no. 4 finish
- 30mm x 6mm flat bar for servery fitting

**Core**

- 3mm zincanneal
- Marine grade protective coat

**Frames/Legs**

- 30mm square stainless steel tube
- 1.2mm wall thickness
- Stainless steel disc feet
- Adjustable by 30/40mm
- 150mm services gap between rear legs

**Undershelves (optional)**

- 1.2mm stainless steel, no. 4 finish, top hat reinforcement

**Beer Stations**

- 1.2mm SUS304 grade stainless steel, no. 4 finish
- Integrated glass rinsers available
- 20mm polyurethane board for front connection
- Designed as either a bridge between modules, drop in or countertop

**Cocktail Stations**

- 1.2mm SUS304 grade stainless steel, no. 4 finish
- Insulated ice well with raised edge
- Speed rail with fully welded rod
- Designed as a bridge between modules
- Integrated drip tray