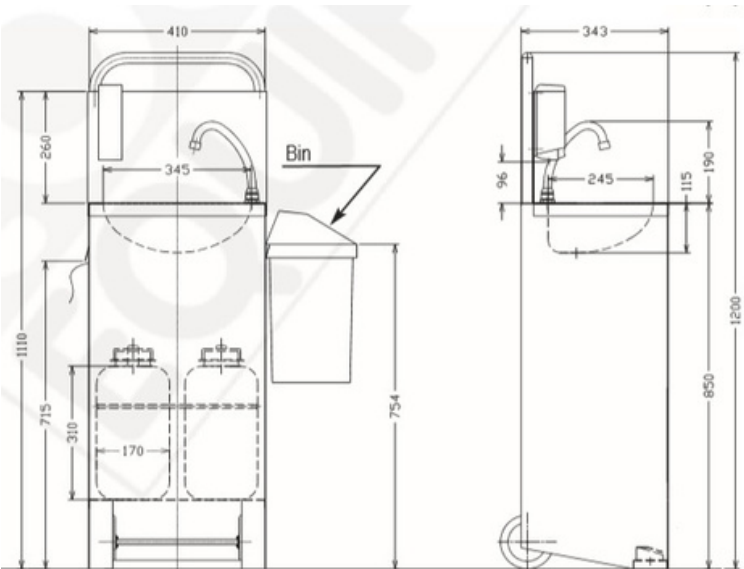
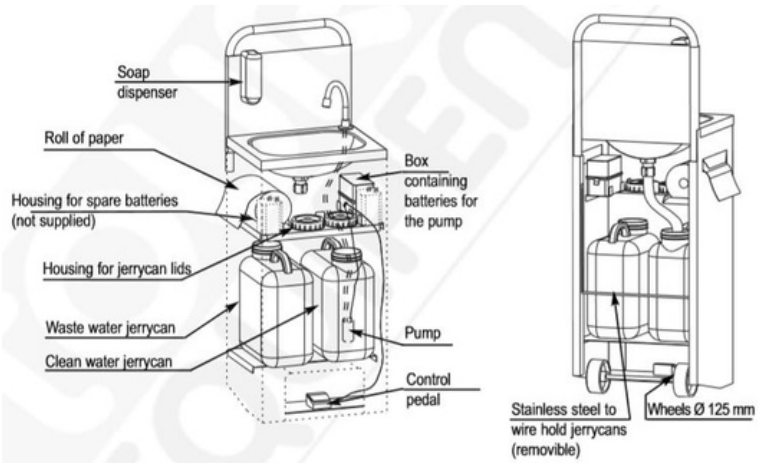




Product Advantages:

- Made of food quality stainless steel.
- Tubular food quality stainless steel handle, diameter 25 mm.
- Fixed wheels 125 mm.
- Food quality stainless steel splash back.
- Goose neck tap 2 jerrycans of 13L (clean water and waste water).
- Soap dispenser (capacity 25 cl).
- Paper towel dispenser (1 roll supplied).
- Hook-on bin (12 L.)
- Foot-operated control: 12 V DC electric pump powered by a transformer.



Technical Data:

Reference	806517
External dimensions	415 x 345 x 1200 mm
Well dimensions	345 x 245mm, depth 115 mm
Hook-on bin (12 L.)	250 x 200 x 400 mm
Batteries	2x 6 volt batteries
Soap dispenser capacity	250 ml
Material	Food quality stainless steel

