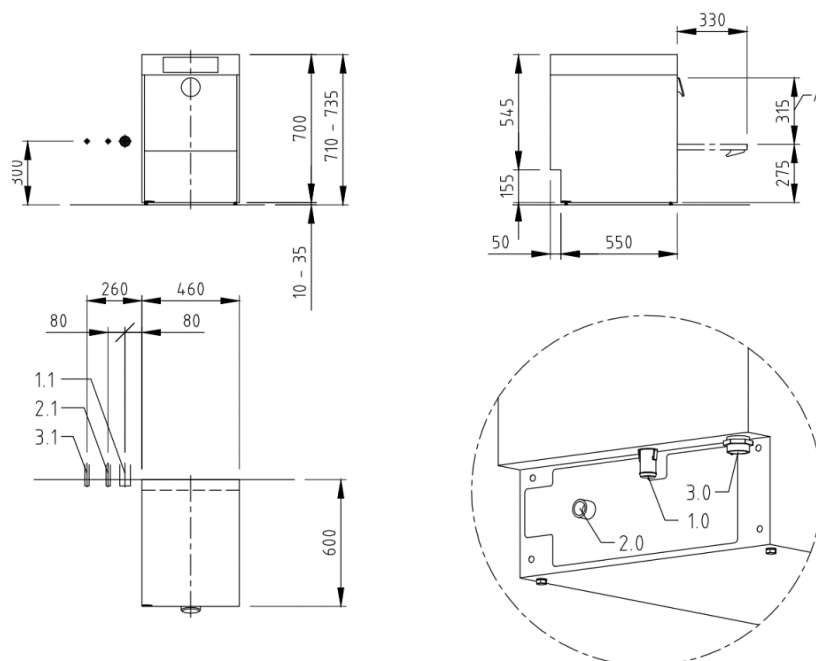




The clean solution

MiClean US

Commercial Glasswasher



Product Features & Benefits

- High visual handle with LED illumination and colour-coded status
- Touch TFT colour display made from hygienic safety glass with program progress indicator and Bluetooth interface
- Intuitive operation-blue operating concept, components that need checking after self-clean cycle are blue in colour
- Interior lights up when door is opened
- M-Clean filter-active filter system for removal of food debris from wash tank (includes monitoring of correct positioning and function)
- Stainless steel detergent and rinse aid lines with in the body of the machine
- Stainless steel single piece wash and rinse arms to ensure dirty wash water does not drip onto clean wears
- Pressure adjustable wash pump at a push of a button. Low pressure for washing the most delicate glassware, higher pressure for washing coffee cups, saucers etc.

Optional Features

- Stainless Steel Cupboard
- GiO Module, integrated reverse osmosis filtration
- Air Concept heat recovery system

TECHNICAL SPECIFICATIONS

Basket dimensions in mm				400 x 400
#Programme cycle in seconds				90/120/180
#Theoretical basket capacity				40/30/20
Water consumption liters per cycle				1.9
1.0	Machine connection drain pipe	Pump out drain	Hose ¾ "	
1.1	Drain point	Max. 300mm from floor	50mm	
2.0	Machine connection water point	Nominal value	Thread ¾ "	
2.5	Water supply point	Flow pressure Temperature Water hardness	1 bar -5 bar Hot water Max 53.4ppm	
3.0	Machine connection electrical	Total rating	2.5mm flexible cable with 15A plug-top fitted	
3.1	Electrical point	Single phase option	1NPE 230V 50Hz, 2.7 Kw	

On cold water connection and/or shortbasket exchange times, the wash cycles may increase to achieve hygienic rinse temperatures

Cycle time can be customized to specific requirements on site