

# Heat and Illumination Solutions



**Australian Made - Built To Last - Australian Owned**

## Roband Lamp Assemblies

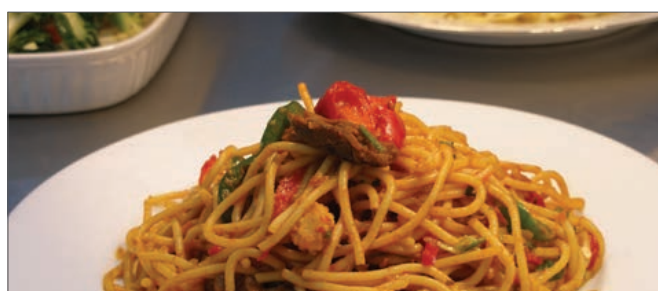
Designed and manufactured in Australia, the range of Roband Lamp Assemblies are a stylish and essential tool to keeping prepared food at the required serving temperature before the meal is delivered to the patron.

The range includes Quartz Heat Lamps that provide a combination of heat and light and are generally used in pass-through areas; Infra-red Heating Assemblies that utilise infra-red to provide variable and efficient heat and are used in the kitchen back-of house where heat but no illumination of the foods is required; and Fluorescent Lighting Assemblies that provide light and match the styling of the Heat Lamps and Heating Assemblies.

The range extends from standard models through to fabricator models. Standard models include control switches incorporated into the lamp body with a plug and cord arrangement so that the units can easily be installed and operated without an electrician's involvement. The fabricator models exclude all switches and controls and are supplied with PTFE wiring that allows an electrician or fabricator to install the units and connect the assembly wires into the kitchen's own wiring and switch arrangement.

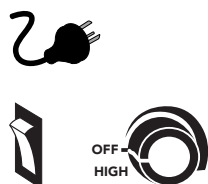
Roband quartz, infra-red and fluorescent lamp assemblies are manufactured from an exclusive extruded anodized aluminium section, specifically designed to breathe. Available in a variety of sizes, the Roband Lamp Assemblies will suit a wide range of applications.

All Roband Lamp Assemblies are designed to run at 220-240V 50-60Hz and are CE approved.



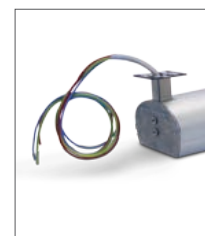
### Standard Models - for Quartz, Infra-red heating & Fluorescent units

The standard units (e.g. HQ450E, HE900L & HF900) come with a control box that houses the isolating on/off switch. They also feature a simple standard mounting system and come complete with a 10 Amp plug and cord.

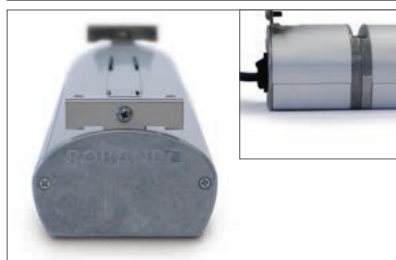


### Fabricator Models - available for Quartz & Infra-red units

The Quartz and Infra-red units are also available without the control box and on/off switch (e.g. HUQ375E, HUE825) so they can be connected to a remote switch setup. These HUQ & HUE models come with the standard mounting mechanism, or can be ordered with your choice of square or round 19 mm (outside dimension) tubular mount. (Tube not supplied)



**Standard** mounting bracket available on standard and fabricator models



**Round** mount available on fabricator models only (model suffix +R)



**Square** mount available on fabricator models only (model suffix +S)



# Quartz Heat Lamp Assemblies

For use in either front or back of house but generally used in pass-through areas, the heat lamp assemblies come fitted with Easy Fit quartz halogen globes engineered to give a balance of heat and light. These Easy Fit globes can be easily removed and replaced without the need for an electrician. All units are fitted with a metal lamp guard that covers each light.



Showing wire guard open for easy replacement of the globe

## Specifications - Standard Models (Includes Control Box)

MODEL	DESCRIPTION	MOUNT TYPE	ELEC CON. (Amps)			POWER Watts	LENGTH mm	LAMP CENTRES*	INCLUSIONS
			AUS	UK	EU				
			⏚	⏚	⏚				
<b>HQ450E</b>	1 lamp in body	Standard	10	13	16	350	450	N/A	Switch, plug & cord
<b>HQ900E</b>	2 lamps in body	Standard	10	13	16	700	900	400	Switch, plug & cord
<b>HQ1200E</b>	3 lamps in body	Standard	10	13	16	1050	1200	345	Switch, plug & cord
<b>HQ1500E</b>	4 lamps in body	Standard	10	13	16	1400	1500	345	Switch, plug & cord
<b>HQ1800E</b>	4 lamps in body	Standard	10	13	16	1400	1800	400	Switch, plug & cord
<b>HQ2100E</b>	5 lamps in body	Standard	10	13	16	1750	2100	400	Switch, plug & cord

220-240V 50-60Hz.



HQ900E pictured



## Specifications - Fabricator Models (No Control Box)

MODEL	DESCRIPTION	MOUNT TYPE	ELEC CON. (Amps)			POWER Watts	LENGTH mm	LAMP CENTRES*	INCLUSIONS
			AUS	UK	EU				
COMPLETE WITH A, N & E WIRE IN PTFE 500 MM IN LENGTH FOR INSTALLATION AND REMOTE CONTROL									
HUQ375E	1 lamp in body	Standard	10	13	16	350	375	N/A	N/A
HUQ375E+S	1 lamp in body	Square	10	13	16	350	375	N/A	N/A
HUQ375E+R	1 lamp in body	Round	10	13	16	350	375	N/A	N/A
HUQ825E	2 lamps in body	Standard	10	13	16	700	825	400	N/A
HUQ825E+S	2 lamps in body	Square	10	13	16	700	825	400	N/A
HUQ825E+R	2 lamps in body	Round	10	13	16	700	825	400	N/A
HUQ1125E	3 lamps in body	Standard	10	13	16	1050	1125	345	N/A
HUQ1125E+S	3 lamps in body	Square	10	13	16	1050	1125	345	N/A
HUQ1125E+R	3 lamps in body	Round	10	13	16	1050	1125	345	N/A
HUQ1425E	4 lamps in body	Standard	10	13	16	1400	1425	345	N/A
HUQ1425E+S	4 lamps in body	Square	10	13	16	1400	1425	345	N/A
HUQ1425E+R	4 lamps in body	Round	10	13	16	1400	1425	345	N/A
HUQ1725E	4 lamps in body	Standard	10	13	16	1400	1725	400	N/A
HUQ1725E+S	4 lamps in body	Square	10	13	16	1400	1725	400	N/A
HUQ1725E+R	4 lamps in body	Round	10	13	16	1400	1725	400	N/A
HUQ2025E	5 lamps in body	Standard	10	13	16	1750	2025	400	N/A
HUQ2025E+S	5 lamps in body	Square	10	13	16	1750	2025	400	N/A
HUQ2025E+R	5 lamps in body	Round	10	13	16	1750	2025	400	N/A

\*Length between centres of each lamp. 220-240V 50-60Hz.



Fabricator model with square tube mounting (Tube not supplied)

HUQ825E pictured








## Infra-Red Heating Assemblies

These units are designed generally for use in back-of-house applications where more heat and no light is required. The heat is provided by a stainless steel element and an energy regulator is used on the standard units to precisely control the output, emitting a very even heat over the length of the warming area.

### Specifications - Standard Models (Includes Control Box)

MODEL	DESCRIPTION	MOUNT TYPE	ELEC CON. (Amps)			POWER Watts	LENGTH mm	INCLUSIONS
			AUS	UK	EU			
								
<b>HE900L</b>	1 element, left control	Standard	10	13	16	900	900	Energy regulator, plug & cord
<b>HE900R</b>	1 element, right control	Standard	10	13	16	900	900	Energy regulator, plug & cord
<b>HE1200L</b>	1 element, left control	Standard	10	13	16	1200	1200	Energy regulator, plug & cord
<b>HE1200R</b>	1 element, right control	Standard	10	13	16	1200	1200	Energy regulator, plug & cord
<b>HE1500L</b>	1 element, left control	Standard	10	13	16	1500	1500	Energy regulator, plug & cord
<b>HE1500R</b>	1 element, right control	Standard	10	13	16	1500	1500	Energy regulator, plug & cord
<b>HE1800L</b>	1 element, left control	Standard	10	13	16	1800	1800	Energy regulator, plug & cord
<b>HE1800R</b>	1 element, right control	Standard	10	13	16	1800	1800	Energy regulator, plug & cord

220-240V 50-60Hz. 



HE1200L pictured

### Specifications - Fabricator Models (No Control Box)

MODEL	DESCRIPTION	MOUNT TYPE	ELEC CON. (Amps)			POWER Watts	LENGTH mm	INCLUSIONS
			AUS	UK	EU			
COMPLETE WITH A, N & E WIRE IN PTFE 500 MM IN LENGTH FOR INSTALLATION AND REMOTE CONTROL								
<b>HUE825</b>	1 element	Standard	10	13	16	900	825	N/A
<b>HUE825+S</b>	1 element	Square	10	13	16	900	825	N/A
<b>HUE825+R</b>	1 element	Round	10	13	16	900	825	N/A
<b>HUE1125</b>	1 element	Standard	10	13	16	1200	1125	N/A
<b>HUE1125+S</b>	1 element	Square	10	13	16	1200	1125	N/A
<b>HUE1125+R</b>	1 element	Round	10	13	16	1200	1125	N/A
<b>HUE1425</b>	1 element	Standard	10	13	16	1500	1425	N/A
<b>HUE1425+S</b>	1 element	Square	10	13	16	1500	1425	N/A
<b>HUE1425+R</b>	1 element	Round	10	13	16	1500	1425	N/A
<b>HUE1725</b>	1 element	Standard	10	13	16	1800	1725	N/A
<b>HUE1725+S</b>	1 element	Square	10	13	16	1800	1725	N/A
<b>HUE1725+R</b>	1 element	Round	10	13	16	1800	1725	N/A

220-240V 50-60Hz. 



Fabricator model with square tube mounting (Tube not supplied)






HUE1125 pictured

# Fluorescent Lighting Assemblies

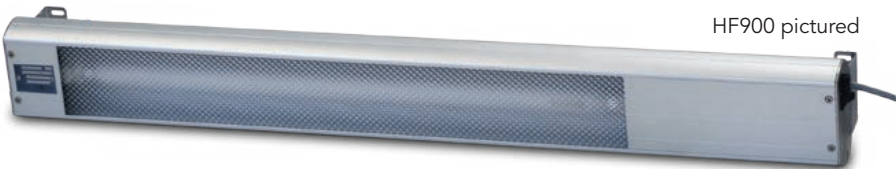
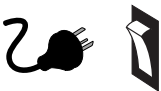
Roband fluorescent lamp assembly profiles match the aluminium extrusion from which the quartz lamp and infra-red assemblies are manufactured.

Specifically designed for use in refrigerated displays or where illumination is required without heat, these units have a diffused perspex cover over the light. They also feature a simple mounting system and come complete with an isolating switch and a 10 amp plug and cord.

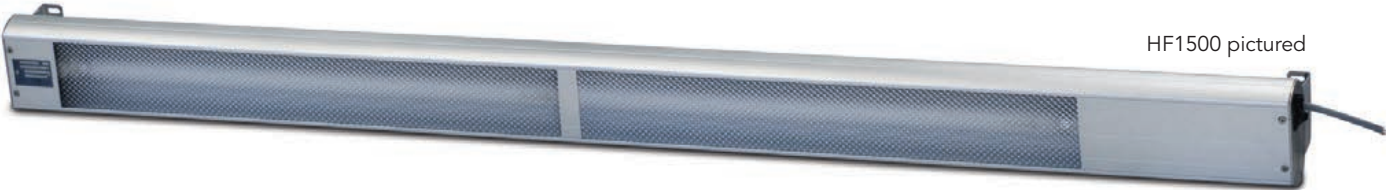
## Specifications - Standard Models (Includes Control Box)

MODEL	DESCRIPTION	ELEC CON. (Amps)			POWER Watts	LENGTH mm
		AUS	UK	EU		
						
<b>HF900</b>	1 fluorescent globe	10	13	16	18	900
<b>HF1500</b>	1 fluorescent globe	10	13	16	36	1500

220-240V 50-60Hz. 



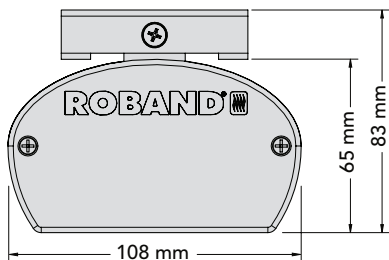
HF900 pictured



HF1500 pictured

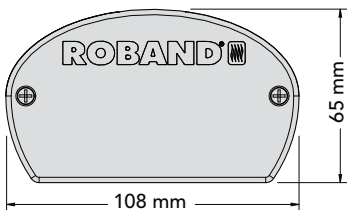


## Dimensions - Standard Models



Dimensions for standard quartz heating, fluorescent lighting and infra-red heating assemblies (HQ, HF & HE).

## Dimensions - Fabricator Models

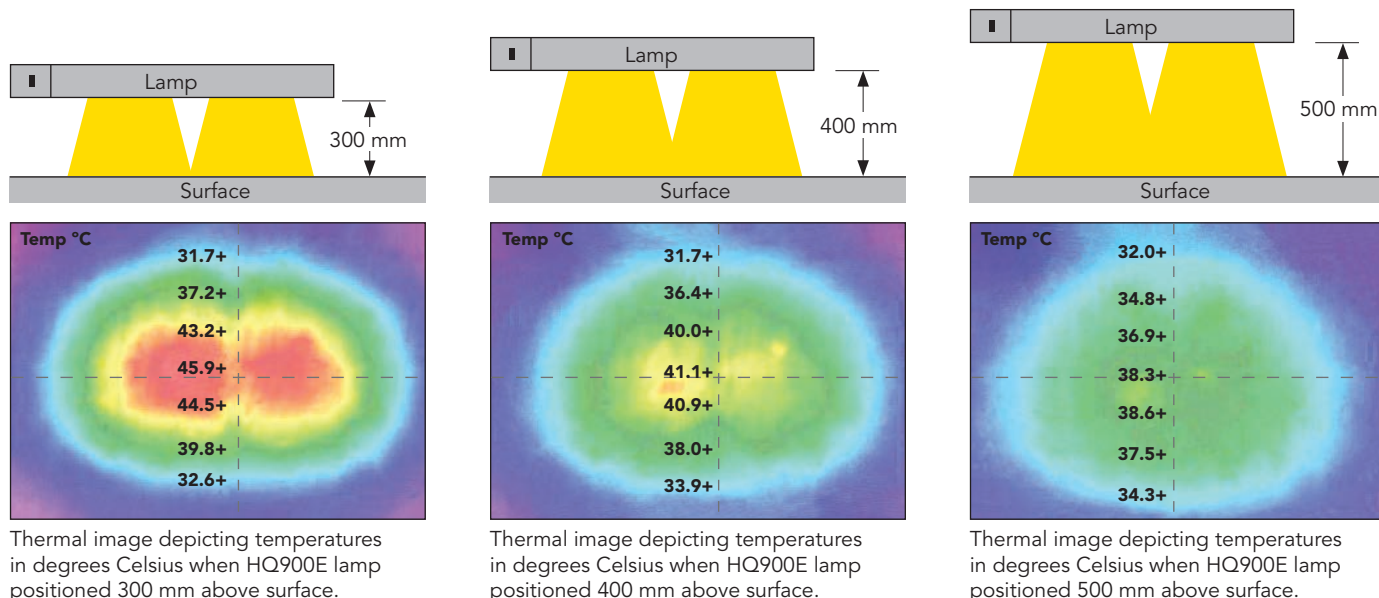


Dimensions for fabricator quartz heating and infra-red heating assemblies (HUQ & HUE).

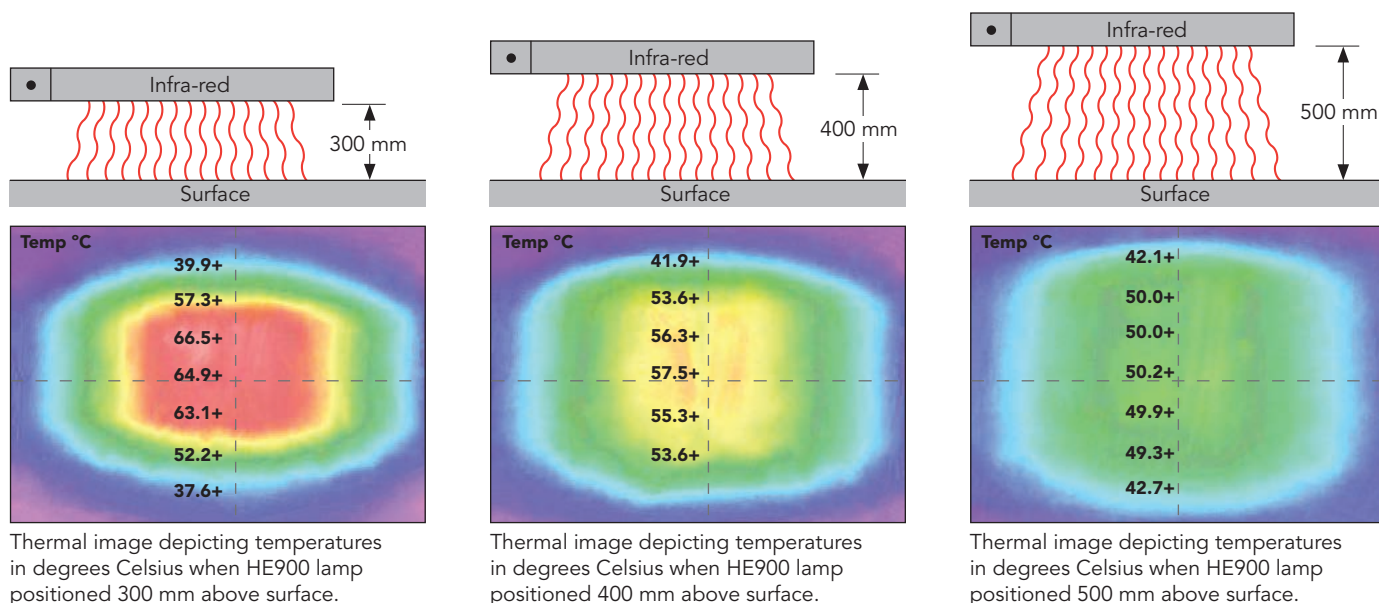
# Heat Specifications

The lamp and heating assemblies are designed to delay the loss of heat from prepared food while waiting to be taken to the table. The thermal images below provide a guide as to heat projection when mounted at various heights. Note these units are not designed to bring food up to serving temperature.

## Quartz Heat Lamp - surface temperature from projected heat - HQ900E\*



## Infra-Red Heat Assemblies - surface temperature from projected heat - HE900\*



\*These results were recorded in our factory under test conditions at 23 °C. Temperatures were recorded on a timber surface. Variations to these temperatures will occur in different ambient conditions and with different food types.

Distributed and serviced in Australia by: **ROBAND AUSTRALIA PTY LTD**

Roband Australia Pty Ltd,  
1 Inman Road,  
Cromer, NSW 2099  
Australia  
Tel: +61 2 9971 1788  
Fax: +61 2 9971 1336  
Email: roband@roband.com.au  
www.roband.com.au

Roband New Zealand Ltd,  
Greenmount Drive,  
East Tamaki,  
New Zealand  
Tel: +64 9 274 1355  
Fax: +64 9 274 1356  
Email: roband@roband.co.nz

Metcalfe Catering Equipment Ltd  
Haygarth Park, Blaenau Ffestiniog  
Gwynedd, North Wales LL41 3PF  
United Kingdom  
Tel: +44 (0) 1766 830 456  
Fax: +44 (0) 1766 831 170  
Email: info@metcalfecatering.com  
www.metcalfecatering.com

Distributor: