



Product Advantages:

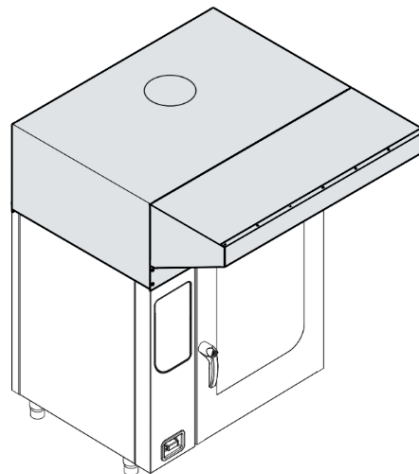
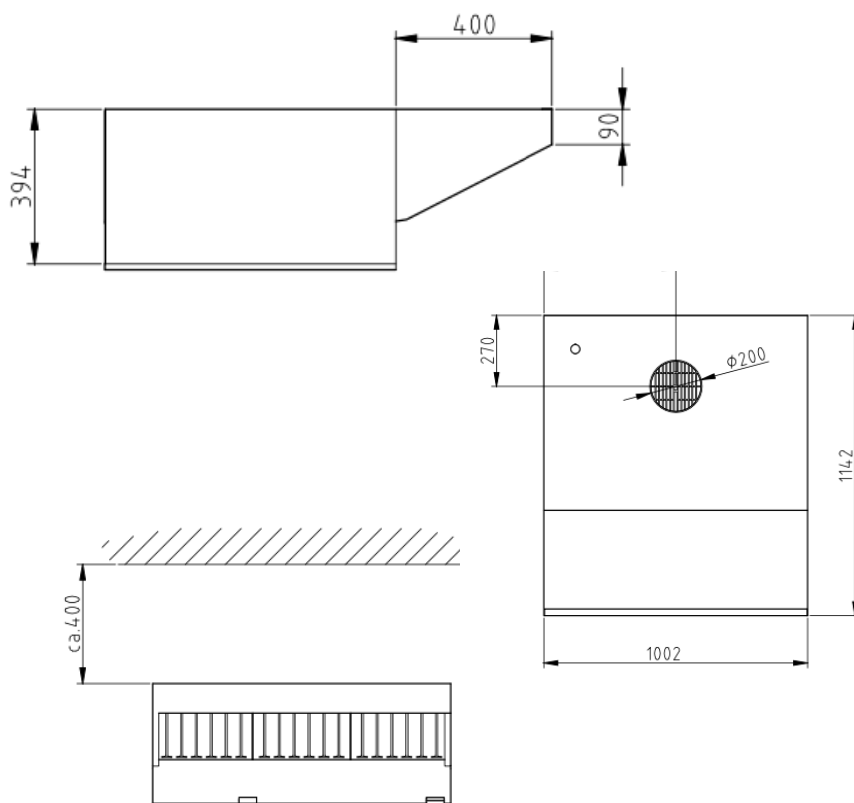
- Reliably condenses large quantities of steam.
- Switches itself on and off automatically.
- Highly efficient.
- Extendable at any time.
- Water Connect unnecessary.
- No need for a permanently installed extraction system .
- No separte water drainage necessary.
- Australian standards certified.

Installation requirements:

- Electrical supply provided by customer.

Models:

- FKE_AIR_6_10 (6 & 10 Tray)
- FKG_AIR_61_101 (6 & 10 Tray gas)
- FKE_AIR_201 (20 Tray)
- FKE_AIR_KIT_Team (Team & Stacked)
- FKE_AIR_202 (40 Tray)



Technical Data:

Length x Width x Height (mm)	1002 x 1142 x 394 mm
Connected load (electrical) (kW):	0.4
Noise level (dB(A)):	< 65
Recommended fuses (A):	16
Net weight (kg):	75
Gross weight (kg):	90
Type of protection:	IPX5

