

Technical data sheet for

# FAST FRI SINGLE PAN GAS FRYER 600mm

FN8130GE



- High performance single pan fish fryer
- Patented infra-red burner system
- Digital display temperature control with 2 basket timers
- Easy clean stainless steel open pan with 10 year limited warranty
- 31L oil tank capacity
- 2 large or 3 standard basket capacity
- Large capacity cool zone
- 32mm (1 1/4") drain valve
- Stainless steel exterior
- Easy service
- Fully modular
- Low back model (FNL) available

## Overall Construction

- Stainless steel pan with 10 year limited warranty
- Bull nose welded 1.5mm 304 stainless steel
- Splashback 1.5mm 304 stainless steel
- Side panels 1.2mm 304 stainless steel
- Double skin door with 0.9mm 304 stainless exterior
- 32mm (1 1/4") drain valve
- 150mm legs in 63mm dia. heavy-duty 1.2mm 304 stainless steel with adjustable feet
- 3 standard baskets and stainless steel lid supplied standard

## Controls

- Digital display electronic thermostat
- Thermostat range 88-195°C
- 2 programmable basket timers with countdown display and alarms
- Heating and basket drop displays
- Programmable melt cycles
- Over-temperature safety cut-out
- Full electronic ignition system
- Independent LH and RH burner systems
- Lock-out alarm indicators on front

## Cleaning and Servicing

- Open stainless steel pans for easy clean
- Easy clean basket support bar
- 32mm (1 1/4") drain valve for effective draining
- Easy clean stainless steel exterior
- Access to all parts from front of unit

# Technical data sheet for FAST FRI SINGLE PAN GAS FRYER 600mm

## Specifications

### Production rate

31kg/hr

### Pan Size

Width 515mm

Length 380mm

Oil frying depth 95mm

Oil capacity 31L (46.5lbs shortening)

### Baskets

3 chrome plated wire baskets  
140mm W x 335mm D x 145mm H

Optional 2 chrome plated large wire baskets

210mm W x 335mm D x 145mm H

Stainless steel perforated basket support plate

### Burners

2 x 45MJ/hr infra-red burners

### Gas Power

90MJ/hr, 25kW

### Gas connection

R 3/4 (BSP) male

300mm from RH side, 35mm from rear,  
and 125mm from floor

Optional rear connection  
(refer specification drawing)

All units incorporate Natural and LP gas regulator

### Electrical Connection

230-240 Vac, 1P+N+E, 50Hz, 0.5A

3 pin 10A cordset fitted

### DIMENSIONS

Width 600mm

Depth 805mm

Height 915mm

Incl. splashback 1130mm

Incl. low back 1085mm

### NETT WEIGHT

95kg

### PACKING DATA

0.70m<sup>3</sup>, 143kg

Width 870mm

Depth 645mm

Height 1255mm

### GAS TYPES

Available in Natural gas and LP gas

Please specify when ordering

Units supplied complete with gas type  
conversion kits

Other gas types on request

### OPTIONS AT EXTRA COST

Waldorf Filtamax filtration system

Fish plates

Extra standard baskets

Large baskets

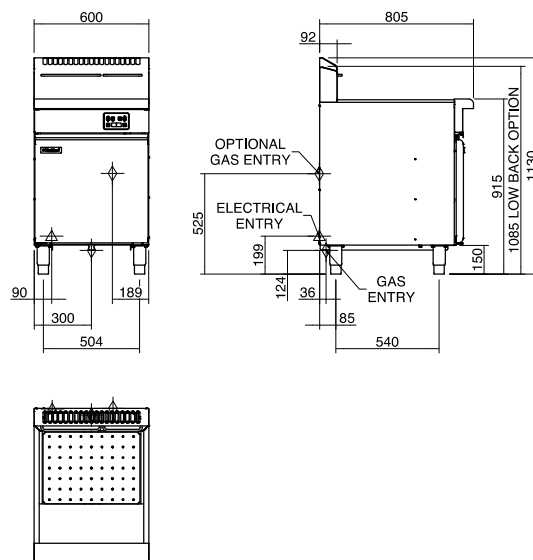
Side splash guards

Joining caps

Castors

Plinth mounting

FN8130GE



**Waldorf**  
800 SERIES

**MOFFAT**

Australia  
www.moffat.com.au  
New Zealand  
www.moffat.co.nz

Australia  
Moffat Pty Limited

Victoria/Tasmania  
740 Springvale Road  
Mulgrave, Victoria 3170  
Telephone 03-9518 3888  
Facsimile 03-9518 3833  
vsales@moffat.com.au

New South Wales  
Telephone 02-8833 4111  
nswsales@moffat.com.au

South Australia  
Telephone 03-9518 3888  
vsales@moffat.com.au

Queensland  
Telephone 07-3630 8600  
qldsales@moffat.com.au

Western Australia  
Telephone 08-9202 6820  
bgarcia@moffat.com.au

New Zealand  
Moffat Limited

Christchurch  
Telephone 03-389 1007  
sales@moffat.co.nz

Auckland  
Telephone 09-574 3150  
sales@moffat.co.nz



Designed and manufactured by

**MOFFAT**

ISO9001  
All Waldorf products are designed and  
manufactured by Moffat using the  
internationally recognised ISO9001 quality  
management system, covering design,  
manufacture and final inspection, ensuring  
consistent high quality at all times.



In line with policy to continually develop and  
improve its products, Moffat Limited reserves  
the right to change specifications and design  
without notice.

Printed in New Zealand  
© Copyright Moffat Limited  
Moffat/BH/6864

