

# SINGLE PAN ELECTRIC FRYER 450mm

E43E

- 17kW high performance single pan fryer
- Digital display temperature control with 3 product timers
- Easy clean stainless steel open pan with 10 year limited warranty
- 27L oil capacity
- 32mm (1 1/4") drain valve
- Rear rollers
- Stainless steel exterior
- Easy service
- Fully modular



E43E

## Overall Construction

- Stainless steel pan
- Bull nose welded 1.5mm 304 stainless steel
- Splashback 1.2mm 304 stainless steel
- Side panels 1.2mm 304 stainless steel
- Double skin door with 0.9mm 304 stainless exterior
- Hinge out counterbalanced heating elements
- 32mm (1 1/4") drain valve
- 63mm dia. heavy-duty 1.2mm 304 stainless steel adjustable legs at front and two rollers at rear
- 2 baskets and stainless steel lid supplied standard

## Controls

- Digital display electronic thermostat
- Thermostat range 88-193°C
- 3 programmable product timers with countdown display and alarms
- Straight or compensating temperature cook time control
- Heating and basket drop displays
- Programmable melt cycles
- Fail-safe over-temperature safety cut-out
- Element tilt switch for heating cut-out on element lift

## Cleaning and Servicing

- Open stainless steel pan with hinge out elements for easy clean
- Easy clean basket support bar
- 32mm (1 1/4") drain valve for effective draining
- Easy clean stainless steel exterior
- Access to all controls from front of unit

# SINGLE PAN ELECTRIC FRYER 450mm

E43E

## Specifications

**Production rate**  
31kg/hr

### Pan Size

Oil capacity 27L (50lbs shortening)  
Width 365mm  
Length 380mm  
Oil frying depth 95mm

### Baskets

2 chrome plated wire baskets  
140mm W x 335mm D x 145mm H

### Elements

3 x 5.66kW stainless steel heating elements

### Electrical requirements

17kW, 400-415Vac, 50/60hz, 3P+N+E

L1 23.6A

L2 23.6A

L3 23.6A

### Dimensions

Width 450mm  
Depth 812mm  
Height 915mm  
Incl. splashback 1085mm

### Nett weight

64kg

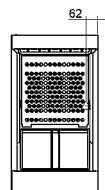
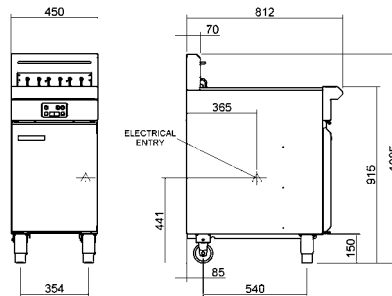
### Packing data

0.54m<sup>3</sup>, 105kg  
Width 870mm  
Depth 495mm  
Height 1255mm

### Options

Adjustable feet at rear  
Filtamax Filtration System  
Extra baskets  
Side splash guards  
Joining caps  
Castors

E43E



[moffat.com.au](http://moffat.com.au)  
[moffat.co.nz](http://moffat.co.nz)

**Australia**  
[moffat.com.au](http://moffat.com.au)

### Moffat Pty Limited

Victoria/Tasmania  
740 Springvale Road  
Mulgrave, Victoria 3170  
Telephone +613-9518 3888  
Facsimile +613-9518 3833  
[vsales@moffat.com.au](mailto:vsales@moffat.com.au)

New South Wales  
Telephone +612-8833 4111  
[nswsales@moffat.com.au](mailto:nswsales@moffat.com.au)  
South Australia  
Telephone +613-9518 3888  
[vsales@moffat.com.au](mailto:vsales@moffat.com.au)

Queensland  
Telephone +617-3630 8600  
[qldsales@moffat.com.au](mailto:qldsales@moffat.com.au)  
Western Australia  
Telephone +618-9413 2400  
[wasales@moffat.com.au](mailto:wasales@moffat.com.au)

### New Zealand

[moffat.co.nz](http://moffat.co.nz)

### Moffat Limited

Rolleston  
45 Illinois Drive  
Izone Business Hub  
Rolleston 7675  
Telephone +64 3-983 6600  
Facsimile +64 3-983 6660  
[sales@moffat.co.nz](mailto:sales@moffat.co.nz)

Auckland  
Telephone +64 9-574 3150  
[sales@moffat.co.nz](mailto:sales@moffat.co.nz)



In line with policy to continually develop and improve its products, Moffat Limited reserves the right to change specifications and design without notice.

© Copyright Moffat Ltd  
AN.BSE.01.19/1620

an Ali Group Company



The Spirit of Excellence