

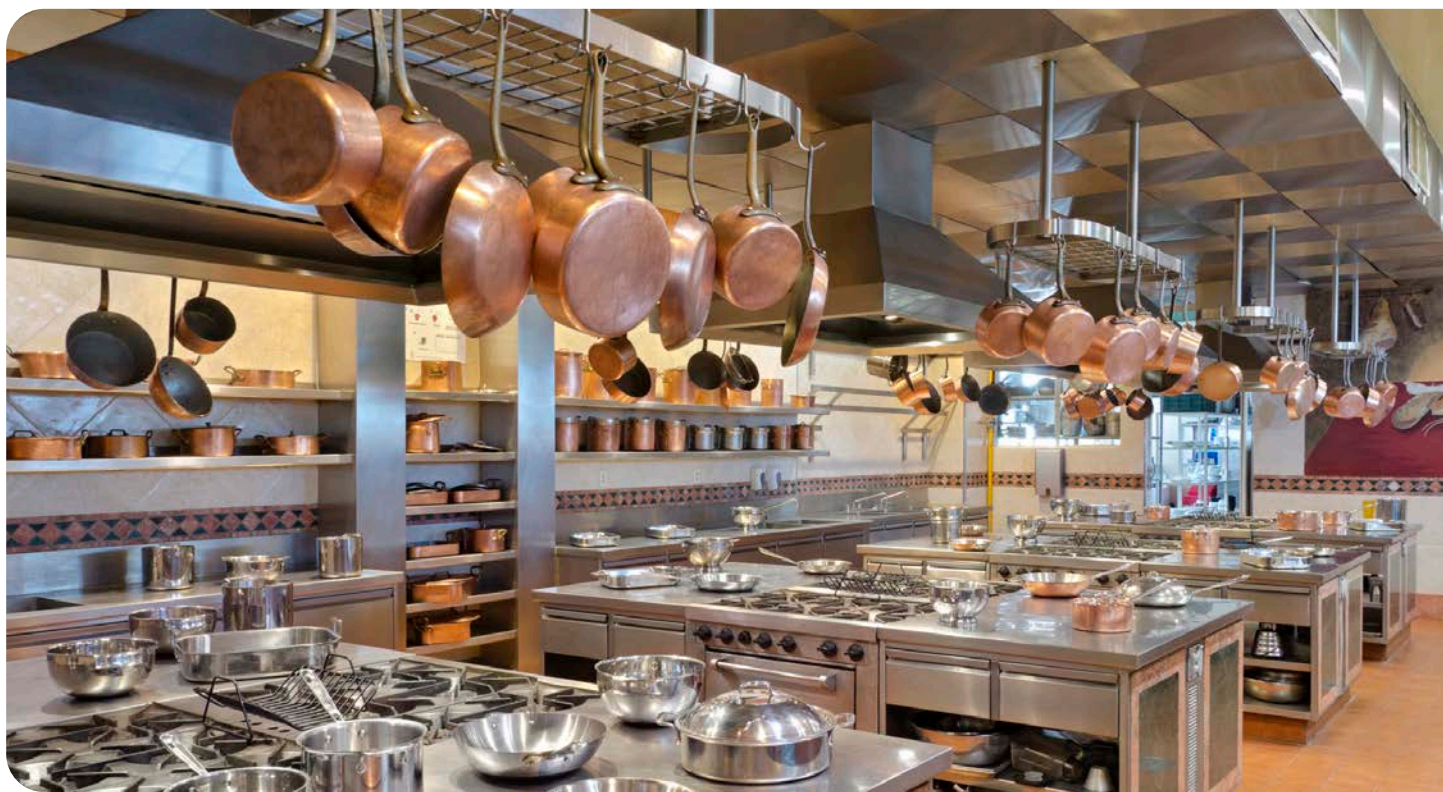
Commercial Catering Equipment



birko







Water and Beverage Products

TempoTronic	5
Domestic & Commercial Urns	6
HydroTap	7
Chilled Water	8
HydroChill	9
Coffee Percolator	10

Catering Products

Commercial Microwave	12
Pie Warmer	13
Bain Marie	14
Contact Grill	15
Vertical Slot Toaster	16
Conveyor Toaster	17
Toaster Griller	18
Fryer	19
Hot Plate	20
Rice Cooker	21
Kitchen Mixer	22
Meat Slicer Medium & Large	23
Insect Killers	24
Touch-free Washroom	25

Water and Beverage Products



Birko Tempotronic

Over-sink Boiling Water

Boiling water when you need it for kitchens large or small.



BOILING



High quality & low maintenance – Australian designed and manufactured from 444 grade stainless steel with built in safety over temperature cut out and a polished stainless steel outer case. Comprehensive 12 month warranty.

Twin-Tank technology – utilises the steam generated from boiling water to pre heat the incoming cold water, improving recovery and reducing energy consumption.

Suits your needs – all models feature durable polished stainless steel case and an optional timer is available.

Tempotronic non timed units

Part Number	Power	Capacity			Dimensions HxWxD (mm)
		Litres	Cups	Cup/hr	
1110074	1.5kW	3	18	100	H439mm x W300mm x D183mm
1110076	2.4kW	5	30	150	H473mm x W329mm x D201mm
1110078	2.4kW	7.5	45	150	H586mm x W329mm x D201mm
1110082	2.4kW	15	100	150	H606mm x W401mm x D301mm
1110086	2.4kW	25	150	150	H786mm x W401mm x D301mm

Tempotronic with timer

1120074	1.5kW	3	18	100	H439mm x W300mm x D183mm
1120076	2.4kW	5	30	150	H473mm x W329mm x D201mm



1110076

Birko Domestic & Commercial Urns

Safe and reliable portable urns

A size to suit any need. Polished stainless steel body with vented cool-to-touch, twist-to-lock lid. High quality composite thermoplastic base and handles for added strength and longevity.



BOILING



High quality & low maintenance – double walled polished stainless steel body with vented, stainless steel twist-to-lock lid. High quality composite thermoplastic base and handles for added strength and longevity.

Concealed element – quick recovery, superior corrosion resistance and effortless cleaning, the element is replaceable on the 10, 20 and 30L models.

Temperature control – thermostat has variable settings, for greater temperature control.

Safety – over temperature protection device turns off the power if the urn boils dry.

Standard inclusions – heating and ready indicator lights, on/off switch, water level sight glass, heat-resistant knobs, easy-lift safety handles and chrome plated brass non-drip tap, 12 month warranty.

Domestic & Commercial Urns				
Part Number	1018005	1018010	1018020	1018030
Capacity (L)	5	10	20	30
Number of cups	30	50	105	160
Heating elements (Watts)	1300	1300	2200	2200
Supply voltage (volts)	220- 240V			
Height (mm)	391	495	591	644
Diameter (mm)	220	220	270	310
Depth incl tap (mm)	301	307	357	397
Handle width (mm)	324	324	374	414
Weight, empty (kg)	2.5	2.9	4.3	5.5
Weight, full (kg)	7.9	11.8	22.5	32.9

Note: Cup size is 167mL



Zip HydroTap

Convenience with advanced G5 technology

Zip HydroTap superior filtration and efficient design makes it the perfect drinking water solution.



BOILING



CHILLED



SPARKLING



Experience water at its best – enjoy pure-tasting boiling, chilled and sparkling water instantly with Zip HydroTap, powered by our most advanced G5 technology.

MicroPurity filtration technology – HydroTap utilises our MicroPurity 0.2 micron filtration for pure-tasting water.

Complement your style – Zip HydroTap is available in 10 tap styles and 7 designer finishes to suit a wide variety of kitchen spaces. Eliminate the need for water bottles in your fridge and a kettle on your benchtop—transform your kitchen into a clutter free and safe environment.

Smarter and more personalised – our latest advanced technology makes it easy to customise your HydroTap G5 system by selecting energy modes and usage settings with the optimised new menu. With easy to change high quality filters, a Zip HydroTap will support your sustainability ambitions and remove the need for bottled water in any environment.



Zip HydroTap Classic Plus - Boiling Chilled Sparkling

Product Code	
H55760Z00AU	HydroTap G5 BCS20 Classic Plus Chrome
H55762Z00AU	HydroTap G5 BCS60 Classic Plus Chrome
H55763Z00AU	HydroTap G5 BCS100 Classic Plus Chrome

The codes on this page are based on Chrome finish



Zip HydroTap Touch-Free - Boiling Chilled Sparkling

Product Code	
H5W760Z00AU	HydroTap G5 BCS20 Touch-Free Wave Chrome
H5W762Z00AU	HydroTap G5 BCS60 Touch-Free Wave Chrome
H5W763Z00AU	HydroTap G5 BCS100 Touch-Free Wave Chrome

The codes on this page are based on Chrome finish



Zip Accessories - Font

Product Code	
95258Z00	Font Kit Raised Chrome – Fits Classic, Classic Plus, Touch-Free Wave, Miniboil Classic and Elite Plus (with extension)

The codes on this page are based on Chrome finish

Zip Chilled Water

Provide a healthier option in your workplace with crystal clear chilled water.



CHILLED



Cheaper than bottled water – enjoy a constant supply of delicious filtered water straight from Zip’s range of ChillTaps.

Sustainable – eliminate the need for bottled water. With Zip ChillTap, you can access chilled water straight away.



Zip Chilled and Cold (Ambient) Water Systems

Product Code	
CTI503-1	ChillTap Extra 140 0.2mic Comm 2019



Zip Chilled Water Systems

Product Code	
CTI501-1	ChillTap 140 0.2mic Comm 2019



Zip Chilled Water Systems

Product Code	
FTI501	Zip Filter Tap

Zip Accessories - Font

Product Code	
92329	Font Kit - Filter Tap / ChillTap - Bright Chrome
92328	Font Kit - ChillTap Extra - Bright Chrome

Zip HydroChill

Pure tasting filtered water on demand to keep up with busy venues

Zip HydroChill provides premium high quality and high capacity filtered water on tap.



CHILLED



SPARKLING

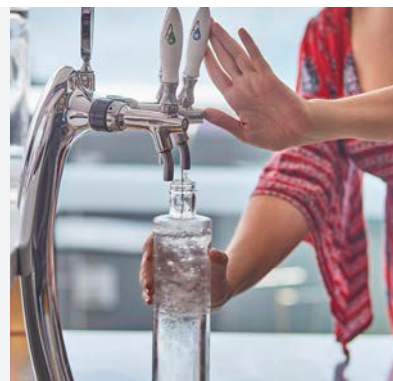


AMBIENT

Sparkling on-tap – HydroChill is the only high capacity system delivering chilled, sparkling water.

High capacity – Choose from 90, 120 or 200 litre per hour options, to satisfy even the most extreme demands.

Greener choice – Reduce your ecological footprint. Encourage bottle refilling and cut down on plastic waste ending up in landfill and remove the need for single use plastic bottled water.



❄️ Chilled 🫧 Sparkling 💧 Ambient

Water Options	❄️ 🫧 💧	❄️ 💧
Order Code	HCS090	HCF090
Tap	3-tap	2-tap
Drip Tray	Fixed position plumbed to drain	
Recovery	90 litres per hour	
Power	230V 50/60Hz Dedicated 10amp GPO	
Water Connection	12.5mm BSP potable cold water	
Filter	0.2 micron filter	
CO2	2.6kg food grade CO2 cylinder Applies only to HCS090	

❄️ Chilled 🫧 Sparkling 💧 Ambient

Water Options	❄️ 🫧 💧	❄️ 💧
Order Code	HCS120	HCF120
Tap	3-tap	2-tap
Drip Tray	Fixed position plumbed to drain	
Recovery	120 litres per hour	
Power	230V 50/60Hz Dedicated 10amp GPO	
Water Connection	12.5mm BSP potable cold water	
Filter	0.2 micron filter	
CO2	2.6kg food grade CO2 cylinder Applies only to HCS120	

❄️ Chilled 🫧 Sparkling 💧 Ambient

Water Options	❄️ 🫧 💧	❄️ 💧
Order Code	HCS200	HCF200
Tap	3-tap	2-tap
Drip Tray	Fixed position plumbed to drain	
Recovery	200 litres per hour	
Power	230V 50/60Hz Dedicated 10amp GPO	
Water Connection	12.5mm BSP potable cold water	
Filter	0.2 micron filter	
CO2	2.6kg food grade CO2 cylinder Applies only to HCS200	



Birko Coffee Percolator

20 Litre

Holds up to 100 cups of coffee, hot and ready to serve.



BOILING



- Quick & easy** – just add cold water and fresh coffee grounds. The 20 litre holds up to 100 cups of quality coffee.
- Always perfect** – the red switch indicator light shows whilst brewing is in progress. A second indicator light shows when coffee is ready to serve.
- Temperature controlled** – once brewed, the heat automatically reduces and maintains an ideal serving temperature.
- Practical & stylish** – polished stainless steel with welded joints for durability, sleek look and easy cleaning.
- Convenient** – easy-to-read level gauge, non-drip tap, heat-resistant knobs and handles.

Coffee Percolator	
Part Number	1060084
Capacity	20 Litres
Delivery	12-100 cups/hr
Power	1500W
Voltage	220-240V
Empty Weight	4.7 Kg
Dimensions (mm)	Dia 280 H 600



Internal parts for 20 L model



Model 1060084

Catering Products



Birko Commercial Microwave

For fast, simple and cost-effective heating and cooking

Powerful 1000W, single magnetron



HOT FOOD

Heating and cooking



Built to last – sturdy stainless steel inner and outer body (#304), ceramic base and non-slip rubber feet for stability.

Multi-function – clear digital display and electronic board with simple push button programming.

Versatile – includes multi power level controls and defrost mode.

Commercial Microwave	
Part Number	1200325
Power Rating	Single Magnetron 10 Amps
Rated output power	1000 Watt
Rated input power	1550 Watt
Voltage	230-240
Internal Shelf	NO
Weight	14.7Kg
Cavity Size	25 Litres
Cavity Dimensions (mm)	W 330 D 330 H 200
Unit Dimensions (mm)	W 511 D 364 H 311



Birko Pie Warmer

Up to 50 & 100 pies

Display and serve hot pies anywhere with ease.



HOT FOOD

Heating and cooking



Built to last – sturdy stainless steel #430 construction and crumb trays, fixed rack levels and metal lower element.

Perfect temperature – European thermostat plus thermometer and temperature display mean your pies are served just right.

Safe & stylish – heat resistant ABS control dials and handles, glass sliding doors (1 side), tempered safety glass and non-slip rubber feet.

Easy cleaning – simply slide out the racks and remove the crumb tray. Removable glass sliding doors and fixed rear glass panel.

Builders model – stainless steel doors and rear panel back.

Pie Warmer				
Part Number	1040091	1040092	1040090 (Builders Model)	1040093 (Builders Model)
Capacity	50 Pies	100 Pies	50 Pies	100 Pies
Racks	4	5	4	5
Maximum Temperature	190 °C	190 °C	190 °C	190 °C
Power	1250W	1850W	1250W	1850W
Voltage	220-240V 10 Amps	220-240V 10 Amps	220-240V 10 Amps	220-240V 10 Amps
Weight	21.3 Kg	28.5 Kg	21.7 Kg	28.5 Kg
Dimensions (mm)	W 585 D 350 H 500	W 745 D 350 H 600	W 585 D 350 H 500	W 745 D 350 H 600



Builders Model

Birko Bain Marie

The smart and cost-effective way to heat and serve

A high quality counter top bain marie to help safely serve a wide range of hot dishes.



HOT FOOD

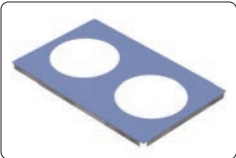
Heating and cooking



Commercial quality – double skinned with concealed element one piece bowl, galvanised steel base, stainless steel elements and stainless steel construction (#304/#430) with stylish brushed finish.

Safe – heat resistant ABS control dials, insulated tap handles, user resettable push button over temperature cut out, and non-slip rubber feet – pans must sit in 30mm of water as the water is heated which in turn heats the pans. Drain tap for fast, safe cleaning.

Bain Marie		
Part Number	1110100 (No Pans & Lids)	1110103 (No Pans & Lids)
Temperature	20-90°C	20-90°C
Power	2.4KW	1.5KW
Voltage	220-240V 50/60Hz	220-240V 50/60Hz
Empty Weight	17.6 Kg	8.6 Kg
Dimensions (mm)	W 700 D 540 H 270	W 340 D 540 H 270



Model 1315179



Note: pans & lids are not included



Model 1110103

Birko Contact Grill

Heavy duty cast iron surfaces for high-volume grilling

These versatile counter top contact grills are ideal for a wide range of toasted and grilled snacks.



HOT FOOD

Heating and cooking



- Versatile cooking surface** – heavy duty, smooth cast iron cooking surfaces capable of withstanding high-volume use.
- Commercial quality** – galvanised steel base and stainless steel construction (#304) with stylish brushed finish.
- European controls** – dual control European thermostat and thermal cut-out function for precision and safety.
- Practical** – spring loaded height settings and removable stainless steel crumb/drip tray for easy cleaning. Operates between 60 and 300 degrees.
- Digital timer** – simple to use digital timer with audible alarm for increased cooking control.
- Safe** – non-slip rubber feet, heat resistant ABS control dials and handles.

Contact Grill			
Part Number	1002101	1002102	1002103
Grill Type	Smooth	Smooth	Smooth
Power	2000W 10 Amps	2400W 10 Amps	2900W 15 Amps
Voltage	220-240V 50Hz	220-240V 50Hz	220-240V 50Hz
Weight	20 Kg	30.7 Kg	32.2 Kg
Max Temperature	60-300 °C	60-300 °C	60-300 °C
Plate Dimensions (mm)	W 260 D 226	W 370 D 280	W 430 D 240
Dimensions (mm)	W 290 D 350 H 240	W 410 D 445 H 235	W 475 D 390 H 235



1002101, 1002102



1002103

Birko Vertical Slot Toaster

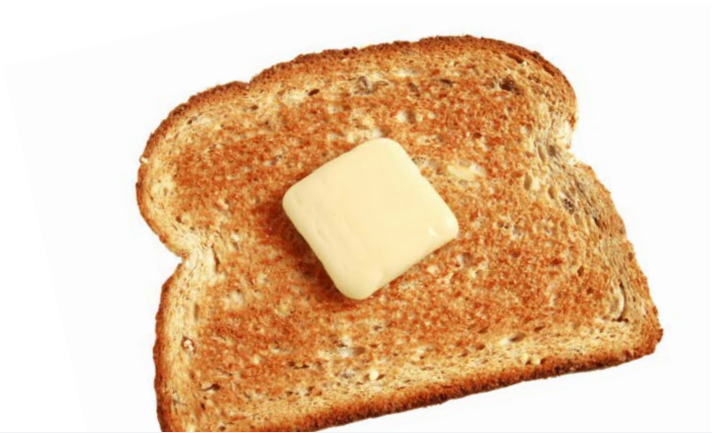
A proven winner for small and medium kitchens

Built tough for robust commercial use, yet very compact and portable, this great value product delivers golden toast day in, day out.



HOT FOOD

Heating and cooking



Commercial quality – galvanised steel base, metal elements and stainless steel (#304/#430) construction with stylish brushed finish.

Fingertip control – dual element control and timer function.

Practical – energy saver 3-slice switch and removable stainless steel crumb tray for easy cleaning.

Safe – heat resistant ABS control dial, body venting, chrome steel element guards and non-slip rubber feet.

***Not suitable for toasting sourdough bread.**

Vertical Slot Toaster	
Part Number	1003203
Slices	Standard size
Power	2100w
Voltage	220-240V 50Hz
Weight	8 Kg
Dimensions (mm)	W 410 D 230 H 270



Birko Conveyor Toaster

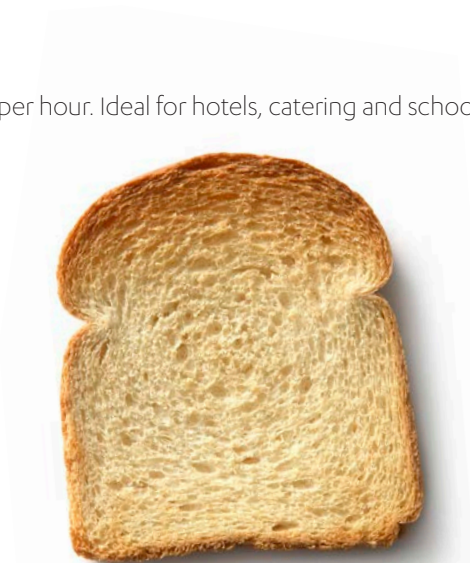
Masses of golden toast for high-volume kitchens

Feed in the bread for perfect toast to roll out up to 600 standard slices per hour. Ideal for hotels, catering and schools.



HOT FOOD

Heating and cooking



Commercial quality – steel conveyer belt, motor and gears, metal elements (upper/lower) and stainless steel (#304/#430) construction with stylish brushed finish.

Fingertip control – European energy control, feed and front return operation or rear exit, dual element control and conveyor speed controls.

Practical – Removable stainless steel crumb tray and chute for easy cleaning and energy saver standby mode for quick reheat. Separate upper element and combined upper/lower element settings for greater control.

Convenient – Pass through or front return configuration.

Safe – heat resistant ABS control dial and adjustable legs.

***Not suitable for toasting sourdough bread.**

Conveyor Toaster	
Part Number	1003202
Slices	600 per hour*
Power	2400w 10 Amps
Voltage	220-240V 50Hz
Max Temperature	60 - 280 °C
Weight	18 Kg
Dimensions (mm)	W 370 D 420 H 420



Toaster opening sizes : 260mm x 60mm



Birko Toaster Griller

A reliable, safe and high performance toaster griller

As a standard piece of equipment in many commercial kitchens, you can rely on this counter top toaster griller for quality and value.



HOT FOOD

Heating and cooking



Quality – galvanised steel base, Quartz elements (3 upper, 3 lower) and stainless steel construction (#304) with stylish brushed finish.

Fingertip control – European energy regulator, dual control for twin element or upper element heat and timer function.

Practical – removable stainless steel crumb tray and chrome-plated grilling rack for easy cleaning.

At 480mm(w) x 250mm(d) the rack takes up to 8 standard bread slices.

New improved rack opening: 30mm upper, 70mm mid and 100 lower position.

Safe – heat resistant ABS control dials and handles, sliding rack locks and non-slip rubber feet.

Toaster Griller		
Part Number	1002001	1002002
Element	Quartz	Quartz
Power	2200W 10 Amps	3200W 15 Amps
Voltage	220-240V 50Hz	220-240V 50Hz
Max Temperature	280 °C	280 °C
Weight	18 Kg	18 Kg
Grill Rack Size (mm)	W 480 D 250	W 480 D 250
Dimensions (mm)	W 600 D 290 H 370	W 600 D 290 H 370



Birko Single & Double Fryer

Reliable commercial performers for all-purpose frying

With stainless steel construction and excellent safety features, these fryers deliver outstanding value and performance.



HOT FOOD

Heating and cooking



CATERING
PRODUCTS

Commercial quality – solid stainless steel construction (#304), strong chrome-plated cooking basket and thermostat controlled with user resettable push button over temperature cut out on the front panel.

Digital timer – simple to use digital timer with audible alarm for increased cooking control.

Easy to clean – the 5L model has a removable oil pan for easy cleaning while the 8L model features an oil drain tap.

Safe – heat resistant ABS control dials, insulated basket handle, non-slip rubber feet and a night cover/lid, electrical interlock to enable the safe removal of the element.

Single & Double Fryer				
Part Number	1001001	1001002	1001003	1001004
Capacity	5 Litres	2 x 5 Litres	8 Litres	2 x 8 Litres
Max Batch Load	2 Kg	2 x 2 Kg	3 Kg	2 x 3Kg
Weight	7.05 Kg	12.5 Kg	8.5 Kg	15.7 Kg
Power	2200W 10 Amps	2 x 2200W 10 Amps	2900W 15 Amps	2 x 2900W 15 Amps
Voltage	220-240V 50Hz	220-240V 50Hz	220-240V 50Hz	220-240V 50Hz
Temperature	40-190 °C	40-190 °C	40-190 °C	40-190 °C
Basket Size (mm)	W 200x220 D 110	W 200x220 D 110	W 200x220 D 180	W 200x220 D 180
Dimensions (mm)	W 282.5 D 435 H 350	W 550 D 435 H 350	W 282.5 D 500 H 400	W 550 D 500 H 400



Double Fryer 1001002



Single Fryer 1001003

Birko Griddle Hot Plate

Heavy duty polished steel plate for commercial kitchens

An all-purpose counter top griddle, ideal for sizzling steaks, burgers, eggs and much more.



HOT FOOD

Heating and cooking



Durable cooking surface – heavy duty, polished mild steel cooking surface – simply season and oil for years of performance.

Commercial quality – galvanised steel base and stainless steel construction (#304) with stylish brushed finish.

Practical – removable stainless steel crumb/drip tray for easy cleaning.

Safe – heat resistant ABS control dial, European thermostat and non-slip rubber feet.

Griddle Hot Plate	
Part Number	1003101
Grill Plate	Smooth
Power	2200W
Weight	27.5 Kg
Voltage	220-240V-50Hz
Product Dimensions (mm)	W 525 D 450 H 200
Plate Dimensions (mm)	L 520 D 320



Birko Rice Cooker

Perfect cooked rice every time!

This high quality cooker is durable, low maintenance and great value!



HOT FOOD

Heating and cooking



Perfect rice – thermostatically controlled dual temperature and dual power rating for cook and keep warm- 1950 watts main power, 85 watts low power.

Safe design – polished stainless steel outer body, red and green indicators, burn-proof pad.

Easy to clean and use – non stick inner bowl. Measure rice and water, then turn on!

Inclusions – comes with utensils (spatulas and rice measure) and 12 months warranty.

Rice Cooker	
Part Number	1007000
Capacity	6 Litre / 60 Cups
Power	1950W
Voltage	220-240V
Empty Weight	10.2 Kg
Dimensions (mm)	Dia 347 H 330



Birko Kitchen Mixer

A powerful, safe and versatile commercial mixer

Manufactured to strict safety standards, this multi-speed and multi-function kitchen mixer is built tough for long-lasting performance.



PREPARATIONS
for all kitchens



CATERING
PRODUCTS

Commercial quality – solid construction with white powder coated finish and stainless steel bowl.

Multi-function attachments – hook, paddle and whisk included, all at variable speeds with a tilting head to suit your requirements.

Safe – designed to strict safety standards featuring a bowl guard, safety switch, and non-slip rubber feet for stability.

Maximum capacity – 500g of eggs / 1200g of dough (dry flour).

Kitchen Mixer	
Part Number	1005004
Capacity	7 Litres
Power	355W 2.5 Amps
Voltage	220-240V 50Hz
Weight	14.2 Kg
Unit Dimensions (mm)	W 400 D 250 H 410



1315732



1315269



1315270



Bowl comes with a handle

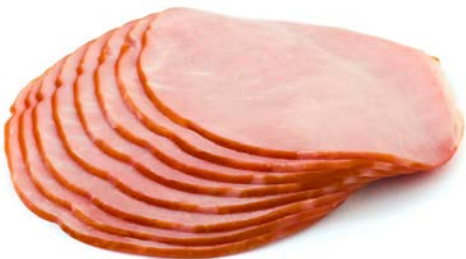
Birko Meat Slicer Medium & Large

Sturdy aluminium cast construction and easy-slide action

High-quality, gravity fed meat slicers with stainless steel blades capable of slicing a variety of meats. Perfect for small and medium commercial operations.



PREPARATIONS
for all kitchens



Commercial quality – aluminium cast construction with removable stainless steel blade, fan-cooled motor for longer operation.

Practical – easy-glide action and adjustable blade settings for varying thickness. Belt driven and comes complete with blade sharpening stones, adjustable moisture deflector and safety cut-out switch.

Safe – non-slip rubber feet with ABS handles and dials, blade and back plate safety guards, blade removal tool.

Meat Slicer		
Part Number	1005100	1005101
Voltage	230-240V	230-240V
Power	150W 0.7 Amps	250W 1.1 Amps
Slicing Thickness	0-12mm	0-15mm
Blade Diameter	250mm	300mm
Weight	18 Kg	25 Kg
Dimensions (mm)	W 537 D 460 H 400	W 597 D 520 H 495



Blade Removal tool

* Not recommended for high moisture content foods. Tomatoes, lettuce, vegetables and cheese, etc.

Birko Insect Killer Small & Large

Zap flies and bugs fast for a more hygienic environment

Attracts and removes a wide variety of flying bugs and insects within a range of 50 to 100 square metres using blue/black UV fluorescent lights.



PEST CONTROL

Kitchen hygiene

Commercial quality – sturdy aluminium construction with a stylish, electrolysis-treated finish and on/off switch.

Wide coverage – blue/black light UV fluorescent tubes attract insects across a range of 50 to 100 square metres.

Low maintenance – remove and empty the waste tray as needed.

Safe – with plastic coated safety guards made to CE standards of quality.

Practical – chrome plated hanging chain and black ABS fixtures.

Insect Killer		
Part Number	1004108	1004109
Coverage	50m ²	100m ²
Elements	2 x 10W (Tube)	2 x 18W (Tube)
Power	35W	50W
Voltage	220-240V	220-240V
Weight	2.9 Kg	4.4 Kg
Dimensions (mm)	W 395	W 645
	D 118	D 118
	H 310	H 400



Insect Killer Model 1004108

UV tube 1315045

Starters (pack of 2) 1315052



Insect Killer Model 1004109

UV tube 1315237

Starters (pack of 2) 1315052

Zip Touch-free Washroom

Upgrade your washroom

Zip Water offers an extensive range of washroom solutions, delivering superior hygiene in any location.



Make washroom hygiene a priority – Zip's premium touch-free washroom solutions, including infrared taps, automatic hand dryers and touch-free toilet flushing, will assist in keeping the washroom environment clean and help to prevent the spread of common infections such as colds, flu, gastroenteritis and viruses such as novel coronavirus (COVID-19).

Water efficient – our sensor taps and toilet flushing systems are rated with WELS water rating

Elegant designs – our touch-free range combines style and function to deliver hygienic hands-free solutions



Zip Washroom Sensor Taps - Deck Mounted Vertical

Product Code	
42220	Sensor Tap – Mains – Deck Mounted

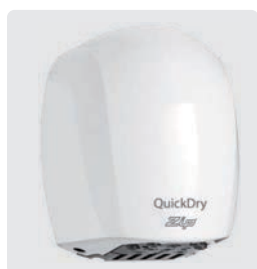


Zip Washroom Sensor Taps - Wall Mounted Short

Product Code	
42223	AquaSense Touch Free Tap – Mains – 200mm Wall Mount

Zip Washroom Sensor Taps - Wall Mounted Long

Product Code	
42224	AquaSense Touch Free Tap – Mains – 250mm Wall Mount



Zip Touch Free Hand Dryers

Product Code	
20042	QuickDry hand dryer – Die Cast Aluminum, Powder Coated, Steri-Touch finish
20041	SilentDry hand dryer – Die Cast Aluminum, Powder Coated
20000	SuperDry hand dryer SD100 – Cast Alloy White Case



Zip Touch Free Soap Dispensers

Product Code	
29013	Liquid Soap Dispenser S/Steel*
29023	Liquid Soap Dispenser ABS

* The stainless steel liquid soap dispenser can also be used to dispense alcohol based hand sanitiser (gel).

Notes:

[illegible]

Notes:



Australia

Birko Heaters Australia Pty Ltd
Customer Care Centre 1800 947 827
sales@birkoheaters.com
birko.com.au

New Zealand

Distributed in New Zealand by:
Zenith Heaters Limited
Customer Care Centre 0800 558 055
sales@zenithheaters.co.nz
zenithwater.co.nz

© 2022 Birko Heaters (AUST) Pty. Ltd. All Rights Reserved.

As Birko's policy is one of continuous product improvement, changes to specifications may be made without prior notice. Images in this booklet have been modified and may not be true representations of the finished goods. Drawings, where used, are not to scale. All dimensions given are in millimetres and sizes give are approximate. The standard cup referred to in this publication is 167 ml. The Standard glass referred to in this publication is 200 ml.

The terms "Birko", "Tempo Tronic" and "Tempo Pro" are trademarks of Zip Heaters (AUST) Pty Ltd. Products described in this publication are manufactured under one or more patents and further patent applications are pending. One or more products described in this publication are also registered designs of Zip Heaters (AUST) Pty Ltd. This information is correct at date of publication 1st August 2022 and is subject to change without notice.