

WASHTECH®

AL8

Guaranteed by the
5-2-1
promise

5 years warranty on stainless cabinet (parts only)
2 years warranty on wash pump (parts and labour)
1 year parts and labour warranty

FASTCLEAN



LIGHTER HOOD



RACK LIFT



AL8 Wide bodied passthrough warewasher

The AL8 offers a wider washing compartment up to 700mm wide x 650mm high. Heavy duty wash performance for washing and sanitising food processing equipment and regular dishracks - releasing staff for more productive use.

FastClean Features

- Stainless arms with removable end caps for cleaning
- Double filtration collects waste, which is easily removable from scrap trays
- L shaped tank with curved corners
- Antidrip hood design channels excess water to drain

Easy to use - Lighter Hood lift

- Full length door springs allow finger tip lifting
- Handle and door link makes cantilevered door tension free
- Triple cycle selection 2, 4 and 6 minute cycles
- Automatic start on hood closure
- Two hp pump recirculates wash water at 800 litres/minute through upper & lower wash arms for balanced wash action
- Equipped with 2 dishracks, 1 cuprack, 1 cutlery container

Easy to install

- 750mm bench depth recommended
- Retrofits bench gaps of 795mm as detailed in our free bench detail guide
- 25A 3 phase supply
- 10KW rinse and 5KW wash heating
- Smart design means ease of access for servicing on hinged service panel

Options - To be specified with order

A full range of racks designed to suit your requirements
Rinse pump
Insulated Hood

Typical load capacity

- 3 x 20 Litre pails, or
- 3 x Plastic Bread trays, or
- 1 x 80 Quart Mixing Bowls, or
- 3 x Baking Trays, or
- 1 x Plastic produce crate up to 700W x 550D x 650H

* REFER installation & bench detail drawings available on request

25A 3 phase N+E Hard wire via wall switch

Ø 15mm-65° hot water

Ø 40mm waste discharge height centreline

280mm

180mm ± 60mm adjustment



Benchwork and pre-rinse units sold separately

Durable

Simple, robust, all stainless steel construction, and electromechanical controls for years of reliable operation.

Guaranteed

12 months parts and labour warranty.

Regulatory Compliance - Watermark

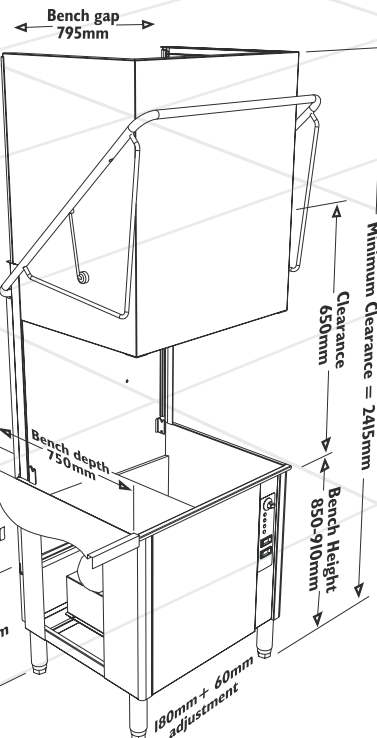
With low temperature deactivation and Watermark backflow prevention system.

Supported Nationwide by the MOFFAT Service Network for after sales support- including Preventative Maintenance Programs. Washtech machines are designed with low cost of service in mind. Easily serviced with controls and componentry all accessible from the front of the machine.



WaterMark

ATS 5200.101
Cert 08603
SAI GLOBAL



SERVICE & SUPPORT

In line with policy to continually develop and improve it's products Moffat Ltd reserves the right to change specifications and design without notice.

Effective May 2007

MOFFAT

www.moffat.com.au

24 HOUR SERVICE
1 800 622 216

REPLACEMENT PARTS
1 800 337 963

Australia
Moffat Pty Limited

Victoria/Tasmania
740 Springvale Road
Mulgrave, Victoria 3170
Telephone 03 9518 3888
Facsimile 03 9518 3833
Email vsales@moffat.com.au
www.moffat.com.au

New South Wales
Telephone 02 8833 4111
Email nswsales@moffat.com.au

South Australia
Telephone 03 9518 3888
Email vsales@moffat.com.au

Queensland
Telephone 07 3630 8600
Email qldsales@moffat.com.au

Western Australia
Telephone 08 9202 6820
Email vsales@moffat.com.au

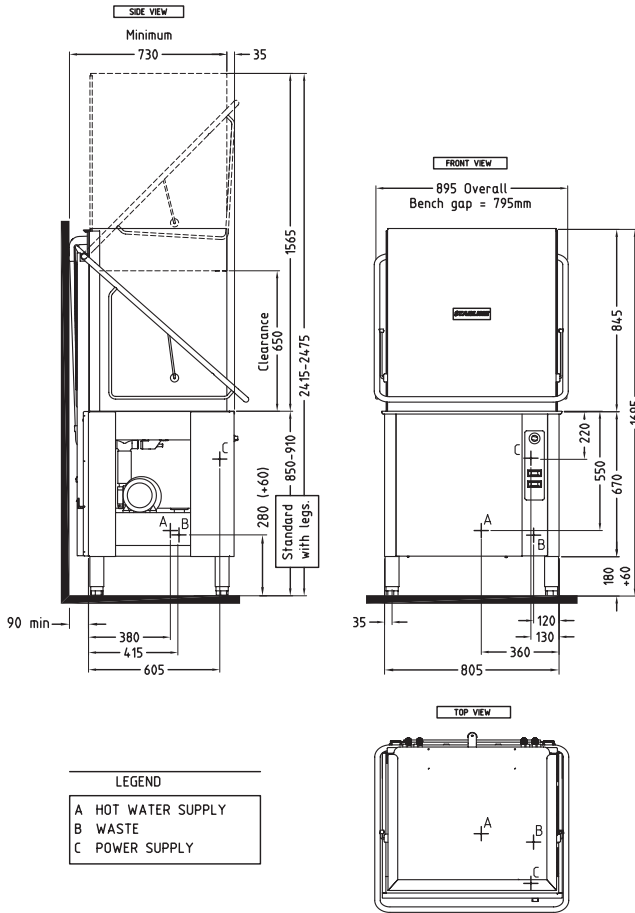
WASHTECH® AL8

AL8 Wide bodied passthrough warewasher

Dimensions

AL8 INSTALLATION DIAGRAM

ALBIS! 08-03-07 1°C



Installation personnel must be suitably qualified and ensure compliance with all local codes and standards including AS3500.1.

IMPORTANT READ the INSTALLATION INSTRUCTIONS and DRAWING

Failure to comply (even partially) with installation instructions may void the warranty. Install the machine on a sound, waterproof, self-draining floor and use adjustable feet to level the machine. Optional legs are available to raise the machine if required.

Power

Machine requires 3 phase, neutral and earth, 400/415V, 25A/ph, 50Hz Permanent wiring via wall switch to point C on drawing, wash pump rotation must be checked after installation.

Water Supply

Temp 65°C ± 5°C
Connection 20 mm = 3/4" BSP male
Flow rate minimum 20 litres per minute
Consumption per cycle approximately 5 litres
Pressure 200-400 kPa = 30-60 psi.
Below this pressure range fit optional booster, above range fit pressure limiter. Do not use small diameter plastic supply lines. FLUSH supply lines before connection. Poor quality supply or excessive water hardness may affect performance or damage machine - filtration and/or softening is recommended.

Waste

Refer point B on diagram - run waste directly behind the machine or through hole in base.

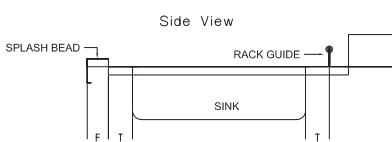
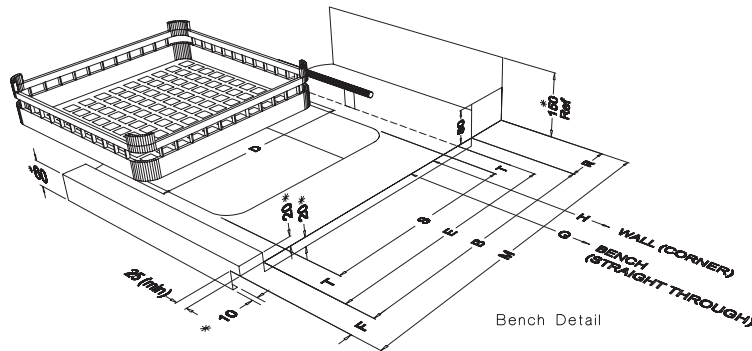
Detergent

If optional pump is fitted installer should insert detergent pump inlet hose into detergent container, open machine door and press and hold detergent prime switch behind front cover until chemical flows into machine. Allow room for detergent to one side of the machine. 20 litre container requires about 450h x 250w x 350d but smaller containers are available from many suppliers. Commercial detergents can be hazardous - read instructions and handle with care.

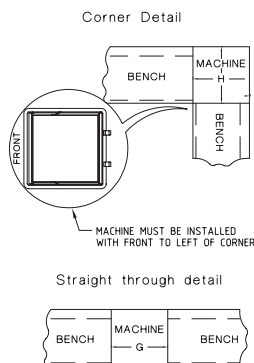
Benchwork

Refer relevant drawings - all dimensions in mm. Recommended bench depth is 700, height 900. For in-line installations a minimum bench depth of 650 is possible with a splash bead of 25. For corner installations the front of the machine must face to the left of the corner. We recommend sink smaller than rack, with guide to prevent rack falling into sink. Align sink with dishrack path as shown. In corner installations high or angled bench return off wall may clash with door handle.

Commissioning - refer Operator Manual



		AL	M2/ME	M1	AL8
M	BENCH DEPTH MINIMUM - for straight through only	750 (700)	700 (650)	600	750 (700)
R	RETURN MINIMUM - for straight through only	150 (125)	125 (90)	115	150 (125)
G	BENCH GAP	640	595	510	790
B	BENCH OPENING	550	535	460	550
F	SPLASH BEAD MINIMUM	50 (25)	40 (25)	25	50 (25)
D	RACK SIZE	500	500	435	500
E	RACK PATH	520	520	450	520
S	SINK WIDTH	450	450	350	450
T	CLEARANCE	35	35	35	35
H	DISTANCE TO WALL FOR CORNER INSTALLATION	760	720	620	N/A



All dimensions in millimetres